

the Platform

the CSI Metro NY Monthly Newsletter

April 2020



www.csimetrony.com

To All The Wonderful
Healthcare Workers



Thank You ! Thank you!
THANK YOU!

LINKS

Institute Website:
csiresources.org

Northeast Region Website:
nercsi.com

**NY Metro Chapter
Website:**
csimetrony.com

INSIDE THIS ISSUE

CSI Metro Game Plan	3
President's Letter	4
Board Members	5
Event Calendar	6-7
This Month's Program	8
Upcoming Events	9-10
Committees	11-12
Member Profiles	13-14
Chapter News	15
Region News	16-17
National News	18-23
Event Gallery	24-29
In the Works	30-36
Membership	37-38

CSI Metro NY game plan...



our **Mission:**

To advance building information management and education of project teams to improve facility performance...



our **Make-Up:**

A mixture of professionals including Architects, Designers, Specifiers, Product Manufacturers & Suppliers, Consultant Partners, Contractors, and Facility Managers & Owners...



our **Plan:**

Leverage the expertise of our diverse membership via innovative & interactive learning programs...

Build trusting relationships with industry partners to explore new methodologies for delivery of projects...

Become active and recognized participants in fueling positive change in the communities in which we work and live in...

a message from the **President...**

To state that these are trying times in an understatement, and I hope all our chapter members and families are being successful in staying healthy during this situation. Now that social distancing is the new reality, the chapter has suspended all future in-person meetings as well our annual joint golf outing with the Long Island Chapter. Once we have more information on government guidelines with regard to group meetings, we will notify you of our future meeting plans.

The Board of the New York Chapter CSI wants you to know that we see our members as part of our extended families and want you to know that we are here as we all work through this trying situation. In order to help maintain contact with our membership, we are working to convert our future meetings to virtual online meetings. We are in the process of developing virtual interactive programs that we hope will be of interest and benefit to you our members. If anyone has any program suggestions or free time to help us develop virtual interactive programs, please reach out to anyone on the board.

As we get our virtual interactive online programs scheduled, we just want you to know that you can reach out to any of the chapter board members, via email or cell phone, to discuss professional questions or just to have someone with which to chat (see board contact information on page 5 of the newsletter). We are here for you. Take Care and Be Safe!

Ken Raikowski

President, CSI Metro NY Chapter



meet the CSI Metro New York Chapter **Board**



President

Ken Raikowski

Kenneth.Raikowski@assaabloy.com

Mobile: 516.236.6779



Vice President

Andrea Dinice

andrea.dinice@sherwin.com



Vice President

Jeremy Douglas

JeremyD@h-b.com



Secretary

Tali Cheses

tali_cheses@gensler.com



Treasurer

Arnie Kravitz

arnie@doorautomation.com



Director

Tom Lanzelotti

tom_lanzelotti@gensler.com

Mobile: 917.881.5309



Director

John Umbach

John.umbach@gmail.com



Director

Renee Pecquex

Renee.Pecquex@ceasarstoneus.com



Director

Dan Reidy

dreidy@behrpaint.com



Immediate Past President

Oliver Wilhelm

oliver@ccwarch.com

Mobile: 201.615.1134



NE Region Director

Bill DuBois

bill_dubois@gensler.com

the CSI Metro New York Chapter **Event Calendar** 2019/2020

Note: All events , dates and locations are tentative and may be changed as necessary...Website and Newsletter will be updated on a monthly basis.

Thursday, September 19, 2019:

[Take a Walk on the High Line](#)

Tour Starts at the Gansevoort Entrance @ 6:00pm

Wednesday, October 9 – Friday, October 11, 2019:

[Construct 2019](#)

National Harbor, Maryland

Wednesday, October 16, 2019:

[AKC Museum of the Dog Tour](#)

101 Park Avenue, NYC

Wednesday, November 16, 2019:

[Moynihan Train Hall](#)

9th Avenue Construction Site Entrance

Wednesday, December 11, 2019:

[Happy Holidays! Our Annual Holiday Party](#)

House of Lasagna

Wednesday, January 8, 2020:

[Construction Draft Day...](#)

[Subcontractor/Vendor Selection: How does the GC Make the Pick?](#)

Offices of Structure Tone, 330 West 34th Street, NYC

Wednesday, February 12, 2020:

[Miller Blaker Factory Tour](#)

620 East 132nd Street, the Bronx

the CSI Metro New York Chapter **Event Calendar** 2019/2020

Wednesday, March 11, 2020:

Engineering Coordination the BIM-Way

Offices of WSP Engineers, One Penn Plaza, NYC

Wednesday, April 8, 2020:

What's My Line?

Carvart Showroom, TBD

Wednesday, May 16, 2020:

Pay Attention to What's Behind the Curtain...

Get the CSI Inside Story from CEO Mark Dorsey

Location, TBD

Wednesday, June 4, 2020:

FORE! Annual CSI Metro NY Golf Outing

South Shore Golf Club, Staten Island

Wednesday, June 10, 2020:

Annual Learning Day & Awards Dinner

Location to be Determined

Wednesday, July 15, 2020:

Summer Planning Meeting #1

Hafele Showroom, TBD

Wednesday, July 23, 2020:

New Member Event/Group Outing

The Royal Palms Shuffleboard Club, 514 Union Street, Brooklyn, TBD

Wednesday, August 12, 2020:

Summer Planning Meeting #2

Offices of Gensler, TBD

Note: All planned programs have been suspended until further notice due to the impact of the COVID-19 Pandemic...We will keep you posted regarding potential virtual chapter activities...Be Well and Stay Safe!

the CSI Metro New York Chapter **Upcoming Events**

the **April Event:**

**join us for our inaugural virtual chapter event,
Wednesday evening, April 22nd...**

Watch for additional information and logistics coming to you soon via our Chapter Website @ www.csimetry.com

Part 1 @ 5:30pm virtual networking...“what’s your favorite drink?”



**have your drink of choice
in hand as we connect
virtually face-to-face...**

Part 2 @ 6:30pm learning webinar

CREATING HEALTHY LIVING ENVIRONMENTS WITH ADVANCED PAINT TECHNOLOGY

This course provides an overview of sustainable design and the retain of healthier environments with architectural paints...Included are discussions about the components of paint. VOC's; independent testing methods and standards; categories of LEED; and the specification of paint systems...

IDCEC 1.0 HSW / AIA 1.0 HSW / GBCI 1.0 CE



PROGRAM SPONSOR Benjamin Moore®

the CSI Metro New York Chapter **Upcoming Events**

the **May Event:**

join us for our virtual
**May chapter event on
Wednesday evening,
May 13th...**



Part 1 @ 5:30pm

State of the Chapter: a Metro NY update...

The Metro NY Board and Committee Chairs will provide an update on what's been going on behind the scenes and what to expect moving forward. As with the April event, feel free to have your favorite drink in your hand...

Part 2 @ 5:30pm A fireside Chat with CSI CEO **Mark Dorsey...**

the Curtain Please...

we'll be pulling back the curtain
to provide an insider look into what's
developing behind the scenes at CSI...

join us for an informative evening with **Mark Dorsey**
the CEO of the Construction Specifications Institute
as he shares all that CSI VIP Membership has to offer...

Where: virtual on-line event
details to follow

When: Wednesday,
May 13, 2020
5:30-7:30pm

Cost: CSI Members Free
Non-Members Free

Registration is required in advance on our website @ www.csimetrony.com

Please watch for additional information and logistics coming to you soon via our Chapter Website @ www.csimetrony.com

the CSI Metro New York Chapter **Upcoming Events**

the **Annual Golf Outing:**



Unfortunately, due to the COVID-19 Pandemic, this year's annual Golf Outing has been cancelled.

the CSI Metro New York Chapter Committees

MEMBERSHIP:



Andrea Dinice, *Chair* andrea.dinice@sherwin.com

The **Membership** Committee recruits new members and works at retaining existing members. This committee works with the House/Program Committee to produce special programs to appeal to particular segments of the design/construction industry.

PROGRAMS:



Tom Lanzelotti, *Chair* tom_lanzelotti@gensler.com

The **Programs** Committee develops programs for the monthly meetings, inviting speakers, making arrangements for those speakers and promoting the programs in advance.

HOUSE:



Bill DuBois, *Chair* bill_dubois@gensler.com

The **House** Committee makes arrangements with meeting venues, receives & processes reservations & payments, coordinates venue set-up, oversees activities at our Chapter Meetings, and welcomes attendees to our Chapter Meetings.

AUDIT / FINANCE:



Tom Scriven, *Chair* tom@empiresalesgroup.net

The **Audit** Committee provides an independent review of the work of the Treasurer after the conclusion of each fiscal year, reporting its findings to the Board of Directors.

The **Finance** Committee advises the Board of Directors of fiscal policy and on investments of the Chapter's assets.

BY-LAWS:



Michael Bean, *Chair* mbean1313@gmail.com

The **By-Laws** Committee provided guidance to the Board of Directors regarding matters involving the Institute and Chapter By-Laws.

GOLF:



Arnie Kravitz, *Chair* arnie@doorautomation.com

The **Golf** Committee organizes and administers the annual golf outing which is a fundraiser for the Francis L. Frybergh Scholarship. This committee solicits donations for individuals and companies in support of the scholarship.

PROFESSIONAL DEVELOPMENT / CERTIFICATION:



Tali Cheses, *Chair* tali.cheses@gensler.com

The **Professional Development / Certification Committee** promotes CSI Certifications within the Chapter and the New York City area construction and design industry. Study programs for exams are organized and offered to coincide with Certification Exam schedules.

the CSI Metro New York Chapter **Committees**

NOMINATING:



TBD by Previous Year's Nominating Committee, *Chair*

The **Nominating** Committee recruits and proposes leaders to the Board of Directors for inclusion on the annual ballot for election of Chapter Officers.

PLANNING:



Bill DuBois, *Chair* bill_dubois@gensler.com

The **Planning** Committee coordinates the planning of Chapter activities for the upcoming year.

AWARDS:



Tom Lanzelotti, *Chair* tom_lanzelotti@gensler.com

The **Awards** Committee makes arrangements with meeting venues, receives & processes reservations & payments, coordinates venue set-up, oversees activities at our Chapter Meetings, and welcomes attendees to our Chapter Meetings.

COMMUNICATION:



Han-Hui Ling, *Chair* hling@henry.com

The **Communication** Committee organizes communication strategies to the membership via the Chapter Website and Chapter Newsletter as well as notifying the membership of events via Constant Contact.

the CSI Metro New York Chapter **Member Profiles**



Each month we will provide **Member Profiles** to celebrate accomplishments, put a face to a name, and just get to know each other a little better...

If you would like to be featured in our Member Profile page, please reach out to our Chapter Membership Chair, Andrea Dinice at andrea.dinice@sherwin.com

Han Ling - CSI, CDT



Han Ling has been in the construction industry since graduating from Brown University in 2009. He is currently employed at the Henry Company, a manufacturer of building envelope systems, and works as a Territory Sales Manager with a focus on the design community.

Han first became involved with CSI when a co-worker informed him of the CDT Certification in 2012. He then ran group study sessions to help his co-workers get their CDT Certification as well. He has been involved with CSI in some capacity ever since.

As our Chapter's Communications Chair, he is responsible for promoting chapter meetings and events; updating the website; and distributing all Chapter communications to the membership.

Han lives in a tiny Manhattan apartment with his fiancé and cat and his interests include traveling; food; sports; and self-improvement. If you run into him on the subway, chances are he will be listening to a life-hack podcast or reading the newest self-help book.

Han-Hui Ling | Territory Sales Manager | **HENRY COMPANY**
P 214.880.3662 | www.henry.com

the CSI Metro New York Chapter **Member Profiles**

Rowan O. Georges – AIA, CSI



Rowan O. Georges, AIA is an Associate Director specializing in specification writing in the New York office of Skidmore, Owens & Merrill LLP. A firm believer in the benefits of collaborative practice models, Rowan is committed to integrating technical standards and protocols into the design process and engaging specifiers in the entire lifecycle of a project, from conceptual development through construction documentation and execution.

Leading the Specifications Group in the firm's New York office, Rowan oversees the development of production of specification documents for all of the New York office's projects. Since joining SOM in 2005, he has developed extensive experience working on high-rise and supertall commercial and mixed-use towers, schools, and healthcare facilities.

With experience on numerous overseas projects, he has developed an acute understanding of working collaboratively with local clients, fabricators, and stakeholders to leverage regional conditions to meet international quality and performance standards.

Rowan brings the real-world experience essential to defining the material qualities necessary for turning designs into well-built structures. With his uncommon ability to weave between grand design strategy and the minutiae of bolts and fittings, Rowan fundamentally shapes some of SOM's boldest projects by delving deep into their fine print.



Annual Chapter Elections:

Each year we hold our chapter elections in order to determine the leadership board for our chapter.

The Board is comprised of eleven (11) members:

- President; Two (2) Vice Presidents; Immediate Past President; Secretary, Treasurer; Four (4) Directors; NE Region Director

the Nominating Committee:

A five (5) person Nominating Committee is currently in place as per the Chapter By-Laws (Arnie Kravitz, Tom Scriven, John Umbach, Andrea Dinice, and Michael Bean)

With the nominating committee in place, next step will be preparing the ballot the Metro NY Board elections...

the Logistics:

- Board to approve final Ballot Wednesday, April 15th
- Ballot issued to Membership via email on Wednesday, April 29th
- On-Line voting period will be from April 27th to May 27th
- New Board Members will be announced at our June Chapter Event on Wednesday, June 10th

If you are interested in being on the ballot or recommend someone to be on the ballot, please reach out to Arnie Kravitz at

arnie@doorautomation.com

Region news



the Northeast Region CSI is comprised of **15 local chapters**

the Region's membership is currently at **792 members**

the Mission of the Northeast Region is to Build Strong Chapters through Communication and Collaboration

The Region employs **Terri Bracken** as an administrative assistant to help the Chapters. Some of the Chapters are involved in utilizing the Dynamic Chapter Program offered by National. Our region administrative assistant Terri Bracken attends these webinars and is always willing to offer her expertise. Terri can also provide services to the chapters by completing AIA submissions and certificates, creating newsletters, chapter invites and coordinating RSVPs. Terri is always excited to hear from the Chapters. In a short time, all the Chapters will be having elections for 2021. She is reachable at 508-523-4704 and neregion@gmail.com

Michael Helly is the web expert employed by NERCSI. Many Chapters rely heavily on Mike's expertise. He can cross advertise Chapter events on the region's website. Maintaining and collaboration has been working well. If Chapters provide Mike with the content work behind the scenes on things like maintaining sponsors and social media links. You can check out an example on our event page. <https://nercsi.com/events/> At no cost to our Chapter we can cross advertise the great events we have monthly. mikehelly.design@gmail.com



NERCSI2020

LONGEVITY / DURABILITY / RESILIENCY

Building on History to Create the Future

CONFERENCE CANCELED: The Northeast Region Conference Committee has decided to reschedule the Northeast Region Conference due to the impacts of COVID-19 and the concern for the health and safety of our members.

The Conference Committee is working on finalizing a new date for the conference that will still be held in Plymouth, MA.

As well, for those who may have already registered and for sponsor, we will be working with you on how refunds will be handled. WE apologize for any inconvenience but, again truly believe that this is the best decision at this time.

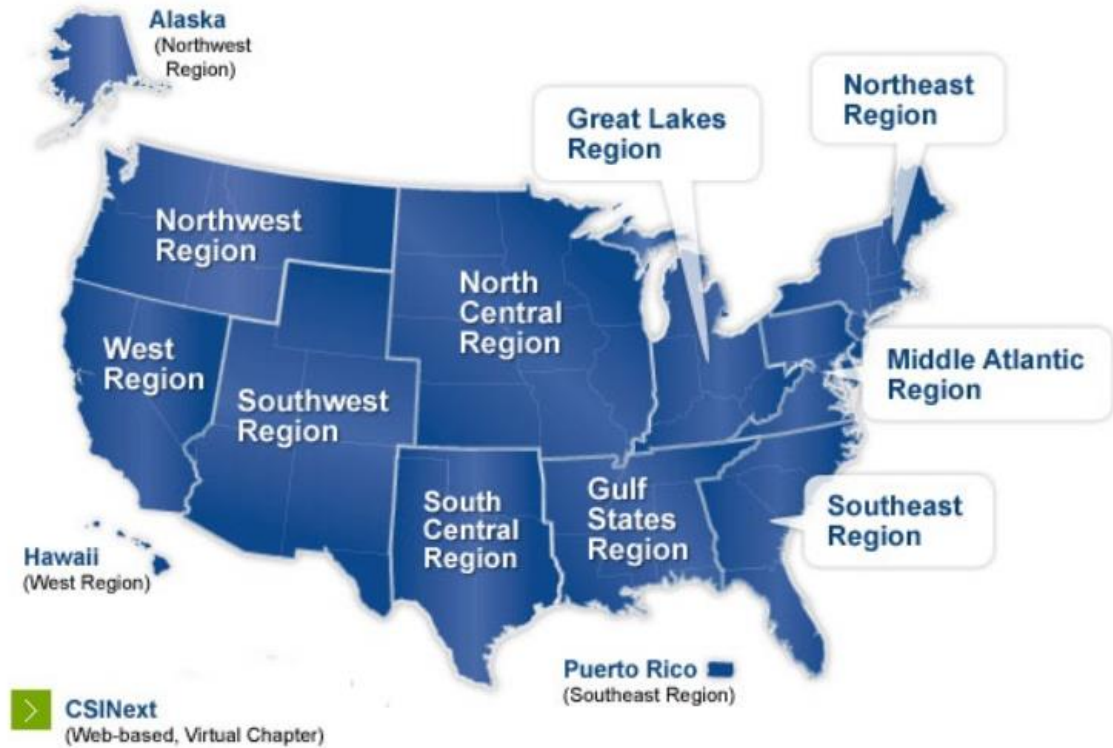
Thank you for your patience, take care and be safe.



Region Elections coming soon....

For 2021 open Regional Board Positions are Vice President and Treasurer. The Regional nominating committee is hard at work preparing the Ballot. All members nominated to serve as an officer must have been a CSI member for at least 2 years and served in a leadership position at a Chapter or at the Region. Please contact us if you are interested in to be a candidate for either of the open positions through our Region Representative [Bill Dubois](mailto:bill_dubois@gensler.com) or Nominating Committee Representative [Oliver Wilhelm](mailto:oliver@ccwarch.com)

Special thanks to Tom Scriven for our Regional update



CSI NATIONAL:

- Comprised of 11 Regions and one Virtual Chapter
- Institute website: www.csiresources.org

a message from CSI Board Chair, Ellen Kay Crews...

Your Professional Community and COVID-19 *Message from the CSI Board Chair*

It's often been said that the single most important element of CSI is its people—you, and this network of friends and colleagues across the country that contribute to each other's personal and professional success. Please understand our community is something you can count on now more than ever.

As we all wonder what comes next and how we will find our way forward, I assure you that the deep ties and genuine friendships within the construction industry community are available as a resource on any issue. It is increasingly clear that while we are more connected through technology, we can still feel more isolated and distant from each other while facing the virus' impact on our daily lives and the economy.

We have all seen how quickly our routines have been disrupted by worries about our friends, families, and livelihood while trying to work with everyone—parents, children, pets—all craving our attention. During such chaotic change, work and daily life still move on as we collectively plan and work for a better future.

Part of being in an association is that you have a national network to help you process ideas about how to handle pressing issues, seek answers about how to adapt during rapidly evolving circumstances and, should you need it, a shoulder to lean on. In the coming weeks and months, we're going to need one another as we settle into the new normal—whatever that may be.



Whether it's business as usual or you are facing something brand new, or maybe you are feeling out there on your own, please use the real-time resource of the [CSI Connect Community Page](#) to pose your questions and support one another by offering your wisdom, expertise, and insights.

Rest assured that we, your volunteer and staff leadership, are looking at additional ways to help you navigate these rough waters. While connecting to the community isn't the only step, it is an important first step, so please use it.

CSI was created by construction industry professionals for the benefit of construction industry professionals, and every day we welcome the opportunity to support you and the entire AEC industry. We'll do our part to be here for you and keep you connected.

Be well, stay safe, and on behalf of CSI, thank you for letting us serve you.

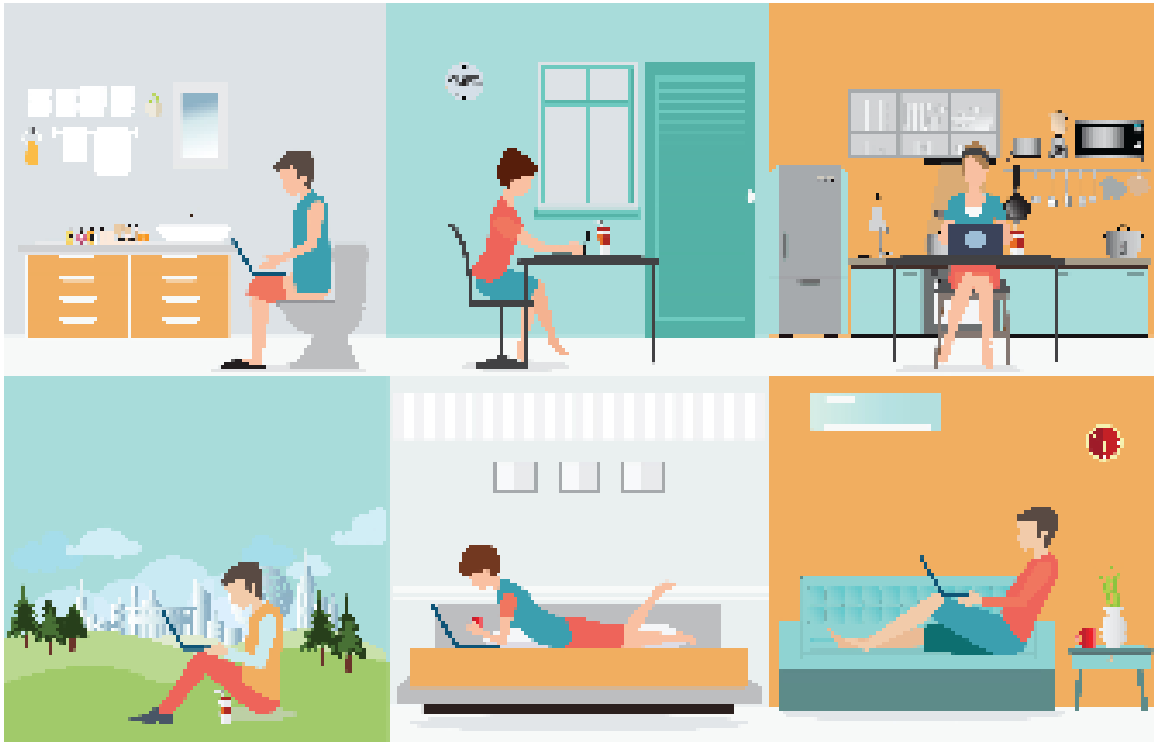
Sincerely,

Ellen Kay Crews, FCSI, CCS, CCCA, CDT, SFP, FMP
Board Chair, Construction Specifications Institute

the above message has been taken from the CSI National website at the following link:

<https://www.csiresources.org/institute/coronavirus-info>

working from home...

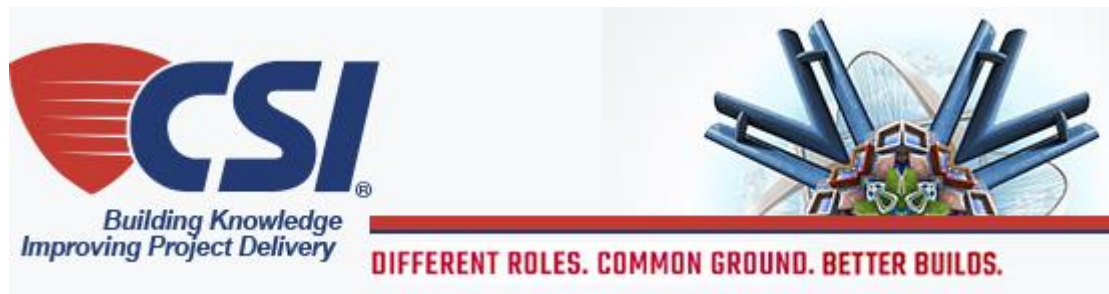


due to the COVID-19 Pandemic, working remotely from home has become new challenge for many of us...For some helpful tips on how to assist in this new dynamic, you can refer to the CSI National Website Blog Viewer...see below:

BLOG VIEWER **CSI'S TOP 10 TIPS FOR WORKING FROM HOME**

By CSI Editorial Staff |

<https://www.csiresources.org/blogs/csi-editorial-staff/2020/03/20/csis-top-10-tips-for-working-from-home?CommunityKey=80c3b4dd-0d3f-4d4e-90f2-3bc6e4135dc2&tab=>



CSI Board Elections

As a voting member of CSI, you will receive your 2020 Election ballot later this afternoon, from our online election provider AssociationVoting.

Ballot instructions will be included in the email.

The Election period opens today, **April 7, 2020, at 12:00 pm ET and ends on April 21, 2020 at 11:59 pm ET.**

Open positions up for election on the CSI Board of Directors include:

- Chair-elect
- Treasurer
- Director-at-Large
- Directors from the Northeast, Northwest, and South Central Regions

To review the 2020 Candidate Profiles, please go to

<https://www.csiresources.org/institute/csi-election>

Also included in the ballot is a proposed Bylaws change, developed and unanimously supported by the CSI Board of Directors. The amendment adjusts the Board Secretary term of service in order to align with the terms of the other Officers going forward.

[Frequently Asked Questions Regarding the Bylaw Amendment](#)

Your vote will help shape the future of your CSI. We thank you in advance for your participation.



SEPT 30 - OCT 2, 2020

Gaylord Texan Resort and Convention Center
Grapevine, TX, USA (Dallas/FortWorth)
Exhibit: October 1-2, 2020
Education: September 30 - October 2, 2020



(Updated 4-1-2020)

Dear CONSTRUCT Show Friends and Family,

As the COVID-19 pandemic evolves, and so many facets of our daily lives dramatically shifted, we want to take a moment to check in on you. Our priority is your safety and well-being, both physically and financially.

We understand the COVID-19 situation is rapidly changing and the health and safety of our exhibitors and participants is of the utmost importance. CONSTRUCT is 6 months away, so we are going ahead as planned and working diligently to deliver an impactful and engaging event. Our belief is that once the COVID-19 situation is behind us, live events and trade shows will be even more important and create a pent-up demand to meet with and see customers face-to-face.

We know this is a stressful time for our community, and the CONSTRUCT Show would like to take a moment to express our gratitude and support to all of you, especially those who are essential workers. We will be monitoring this closely and keep you informed at regular intervals, so you have the best information and can plan accordingly. The latest updates will always be on our [News page](#).

So, stay tuned and be assured we are doing everything within our power to guarantee once this passes, we will be ready to provide you with a great experience. You take care of your family, employees, customers, and community now – and we'll be with you every step of the way to September.

As we all wait for normalcy to return, if you have any questions, or need any type of assistance, please do not hesitate to reach out.

Stay safe and healthy,

Douglas Lugo
CONSTRUCT Show Director

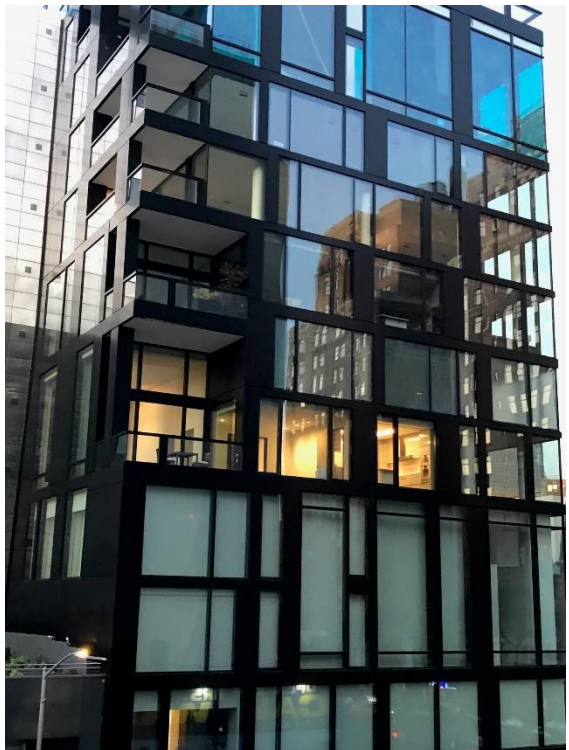
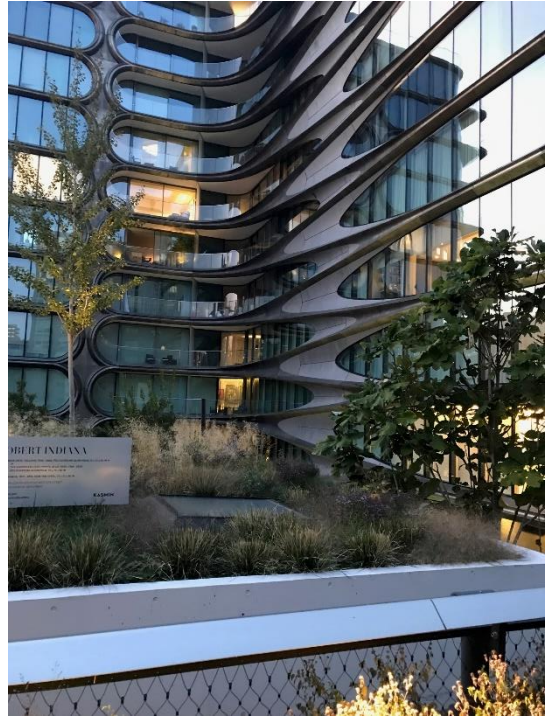
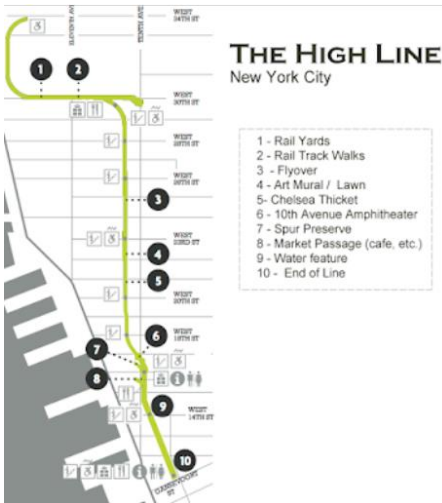
If you would like additional information regarding construct 2020 please reach out to our chapter programs chair, Tom Lanzelotti at tom_lanzelotti@gensler.com

the CSI Metro New York Chapter Past Events Gallery



HIGHLINE WALKING TOUR
Wednesday, September 19, 2019:

Thanks to OUR TOUR SPONSOR:



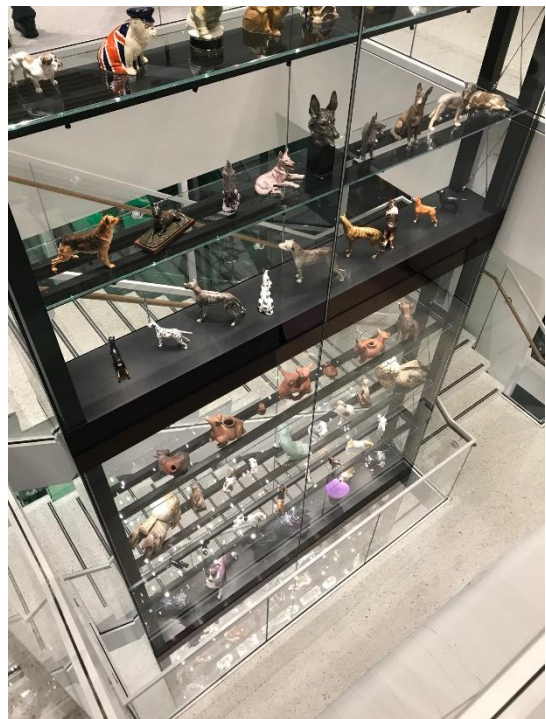
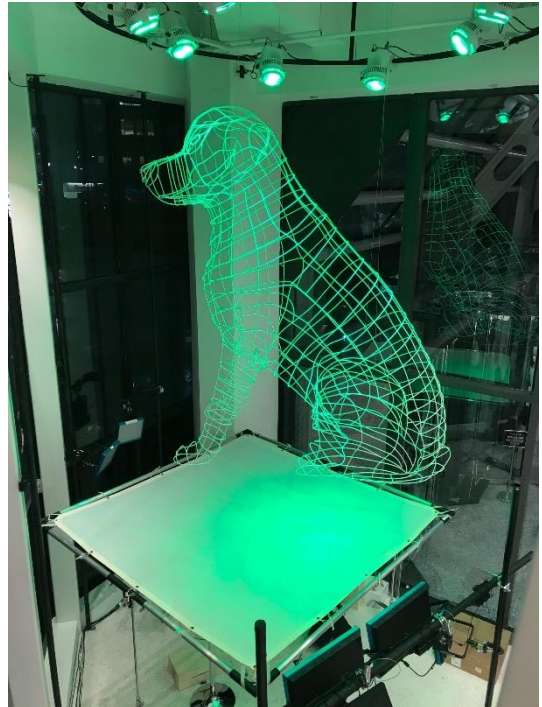
the CSI Metro New York Chapter Past Events Gallery



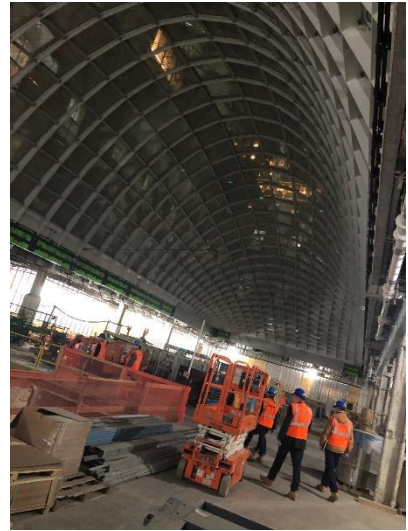
Wednesday, October 16, 2019:

SPECIAL THANKS:

- Jan Gross / Gensler
- sfddsafds / Museum of the Dog
- fdsfdfa/AKC



the CSI Metro New York Chapter Past Events Gallery



**MOYNIHAN TRAIN HALL
CONSTRUCTION TOUR**
Wednesday, November 13, 2019:



Certificate of Completion



**SPECIAL THANKS TO OUR
TOUR HOSTS & GUIDES:**

SOM

SKANSKA



the CSI Metro New York Chapter Past Events Gallery



OUR ANNUAL HOLIDAY PARTY...
Wednesday, December 13, 2019

SPECIAL THANKS TO OUR **HOLIDAY PARTY** SPONSORS:

ASSA ABLOY

dormakaba 

 **HOHMANN & BARNARD, INC.** **MiTek**

PPG


gcp
applied technologies

 **SHERWIN WILLIAMS.**

S·Y·L·V·E·S·T·E·R
ASSOCIATES LTD.

the CSI Metro New York Chapter Past Events Gallery



SPECIAL THANKS TO OUR HOST & PRESENTERS:



Dan Finnegan
Dave Hamilton
Ed Rowan

SPECIAL THANKS TO OUR FOOD SPONSOR:



CONTRACTOR DRAFT DAY:...
Wednesday, January 8, 2019

Learning Objectives:

- #01: Explain the importance of the **Subcontractor Pre-Qualification Process** in establishing a base level of quality and experience level for the performance of the work.
- #02: Describe how the **Subcontractor Bid Analysis Process** works and its value in assuring products and trades selected to deliver the project work have a complete understanding of the documented design intent.
- #03: Explore how the **Value Engineering/Cost Savings Process** during the bidding phase can provide added value to the Client with respect to budget and schedule implications.
- #04: Discuss the **Product Submittal Process**, identifying the roles of the various team members (Design Professionals, Product Suppliers/Manufacturers, Subcontractors/Installers, and Contractor) and the potential value of properly prepared submittals and substitution requests.



Certificate of Completion



the CSI Metro New York Chapter Past Events Gallery



join us for a behind-the-scenes look into the operations of one of the
New York Market's Premier Architectural Woodworking companies
Miller Blaker...

get insight to how old-school techniques and new-school technologies are employed in
the design, fabrication + installation of high-end architectural millwork...



Miller Blaker Factory Tour: Wednesday, February 12, 2020



the CSI Metro New York Chapter **In the Works...**

The success of our Chapter will always be based upon the quality of our membership experience. There are many factors that comprise the Membership Experience ranging from Institute Provided Programs; Institute Resources; Regional Communication; Dedicated Chapter Leadership; and Quality Educational Programs; but most importantly it comes down to Member Participation & Feedback. With this in mind, Starting next September the Metro NY Chapter will be piloting a formalized **Sponsorship Program** to assist in supporting the many initiatives/programs that the Board has in the works...

Annual Sponsorship Opportunities:

Platinum (\$1,500):



- Company Logo displayed on chapter website
- Company Logo displayed in Monthly Newsletter (Full Page)
- Company Logo displayed on Sponsorship Banner (displayed at all CSI Metro NY events)
- Feature Article in one (1) Monthly Newsletter
- Platinum Sponsor Plaque presented at annual Awards Dinner

Gold (\$1,000):



- Company Logo displayed on chapter website
- Company Logo displayed in Monthly Newsletter (Half Page)
- Company Logo displayed on Sponsorship Banner (displayed at all CSI Metro NY events)
- Feature Article in one (1) Monthly Newsletter

Silver (\$750):



- Company Logo displayed on chapter website
- Company Logo displayed in Monthly Newsletter (Half Page)
- Feature Article in one (1) Monthly Newsletter

Bronze (\$250):



- Company Logo displayed on chapter website
- Company Logo displayed in Monthly Newsletter (Quarter Page)

the CSI Metro New York Chapter **In the Works...**



Starting next month, in the April Newsletter, our Membership Committee will be sharing the responses from our members to the “The Big Question” of the month...

Our Membership Committee will be reaching out to you, our Members, to ask you a monthly fun-fact question...All you need to do is share a bit about yourself...The hope being that we all get to learn a little bit more about each other and create synergies based upon what makes each of us tick...

Look for an email from Andrea Dinice, our Membership Committee Chair during the upcoming month and please respond to let your fellow members know...

WHAT’S YOUR FAVORITE... and WHY?

the CSI Metro New York Chapter **In the Works...**

Event Sponsorship Opportunities:

Event Host:



- Provide Venue for Program
- Provide Food & Beverage for Program
- Company Logo displayed on Website as Event Host
- Company Logo displayed in Newsletter as Event Host
- 5-minute presentation time at Event
- Event Host Certificate

Program Presenter:



- Provide Program Content & Lead Program
- Company Logo displayed on Website as Program Presenter
- Company Logo displayed in Newsletter as Program Presenter

Event Table Top (\$250):



- Table Top at Event
- 10-minute presentation at Event Social Hour

If you are interested in supporting the Chapter via one of the proposed sponsorship opportunities, please reach out to your:

- Chapter Program Chair at tom_lanzelotti@gensler.com or
- Chapter President at Kenneth.Raikowski@assaabloy.com

the CSI Metro New York Chapter **In the Works...**

While we focus many of our efforts on the inner workings of our Chapter, the Board feels that it is important for us as a professional organization to also focus on how we interact with the community in which we work in and what the Exterior Face of CSI Metro NY should be.

With this in mind, Starting next September the Metro NY Chapter will be piloting a formalized **Community Outreach Program** to assist in supporting the many community based organizations in the Metro NY area. We will be looking for passionate volunteers to propose community partnerships and spearhead those efforts. Below are a few of the possible partnerships the Board has discussed...

Community Outreach Opportunities:



NY CARES: 212.228.5000

- Coat Drive Program (have a collection box at our chapter events)
- Environmental Program (park clean-up project)
- Benefactor Donation



ACE GNY (Greater NY) 646.757.5829

- Provide a Mentor Team
- Provide a Donation



REBUILDING TOGETHER NYC 718..488.8840

- Heroes at Home National Rebuilding Day

the CSI Metro New York Chapter **In the Works...**

Community Outreach Opportunities:



FOOD BANK for NYC: 212.566.7855

- Donate Monthly
- Fundraise



CITY HARVEST: 646.412.0600

- Group Volunteering
- Fundraise
- Food Donor



CANSTRUCTION New York:

email@CanstructionNY.org

- Design/Build Competition Team



**American
Red Cross**

**AMERICAN RED CROSS:
212.RED.CROSS ext. 2067**

- Host a Blood Drive
- Financial Donation
- Volunteer Opportunities

If you are interested in supporting the Chapter via one of the proposed sponsorship opportunities, please reach out to your please reach out to your:

- Chapter Program Chair at tom_lanzelotti@gensler.com or
- Chapter President at Kenneth.Raikowski@assaabloy.com

the CSI Metro New York Chapter **In the Works...**

One-on-One Connection Conferences:

How do you foster intellectual relationships between the leading Design Professionals and Innovative Manufacturers/Suppliers to improve Project Delivery?



WE re-invent the Trade Show via
CSI Metro NY Connection Conferences

The Program Plan:

A one-day event

Twenty (20) Participants:

- Ten (10) Manufacturers/Suppliers
- Ten (10) Design Professionals

Two Sessions:

- Morning with five (5) rotating meet-ups
- Afternoon with five (5) rotating meet-up

Sponsored by our product Manufacturer/Supplier partners

Design Professionals attend via invitation from the

Manufacturer/Supplier partners

Breakfast, Lunch, and Drinks/Dinner included

Designed to provide a one-on-one connections

The hopeful outcome being:

The development and strengthening of relationships...

The Development of enhanced and innovative solutions to raise the bar on project delivery for our clients...

If you are interested in supporting the Connection Conference as Manufacturer/Supplier partner please reach out to our Chapter Programs Chair Tom Lanzelotti at

tom.lanzelotti@gensler.com

the CSI Metro New York Chapter **In the Works...**

The Return of ID Badges:



How do you foster relationships between the leading Design Professionals and Innovative Manufacturers/Suppliers?



You help them break the ice with CSI Metro New York ID Badges...



Let others know your name and who you work for...

Let them know:

- Are you a new member (first year)...
- Are you a Chapter Board Member...
- If you are a long-term member, when did you join...



the CSI Metro New York Chapter **So Why Join?**

CSI...an organization comprised of a diverse, cross-sectional group of design + construction professionals focused on improving the built environment through collaboration and leveraging ideas & experience...

ADVANCE Your Career

Be confident in your role in the construction project, and earn your employer's confidence in your skills and knowledge. As a part of the CSI Community, you have added resources to earn your certificate as a Construction Document Technologist (CDT) or one of the advanced CSI certifications...

STAY Up-To Date

CSI brings you the best in construction building communications, CSI's monthly peer-reviewed magazine, "The Construction Specifier", discusses the latest trends in construction building and design. CSI Weekly e-newsletter keeps you up-to-date on issues and events affecting your profession and the industry. And your local chapter keeps you current on the issues important to where you live and work...

CONNECT with Colleagues

Engage with colleagues from around the world on www.csi.resources.org, join an on-line community and your local chapter. You know how valuable it is to be a member of professionals from every facet of the industry...

DRIVE the Industry

CSI volunteers develop the standards and formats that guide construction communication. They create MasterFormat, the Practice Guides, and many other projects and programs vital to the construction community. As a member of CSI, you can volunteer and drive the industry locally and nationally...

are you ready for your **VIP** Member Experience?

the CSI Metro New York Chapter Membership Application

To join, you can go to our chapter website www.csimetrony.com under the Links tab to find a membership enrollment form...



**110 South Union St Ste 100
Alexandria, VA 22314-3351**

Phone: 800- 689-2900

Email: csi@csinet.org

CSI Tax ID#: 53-0242938

MEMBERSHIP ENROLLMENT FORM

MEMBERSHIP TYPES

Professional: \$275.00
I am a technically experienced individual whose primary function is to author, manage or communicate building information; to create, interpret or use construction documents; or to educate, support or assist the construction industry.

Emerging Professional: \$150.00*
I am an individual who has less than three years experience in any construction-related field and am a prospective Professional Member.

Student: \$50.00*
I am a full-time student enrolled in an undergraduate or graduate program in a construction industry curriculum at an educational institution.

**If selecting Emerging Professional or Student Membership, please call CSI Member Services for related chapter dues. Emerging Professional membership is limited to 3 years, at which time members must renew at the Professional level.*

Personal Information Mr Ms Mrs Dr

First name: _____ Middle initial: _____

Last name: _____

Title: _____

Firm name: _____

Website: _____

Address: _____

City | State | Zip: _____

Business phone: () _____ Fax: () _____

Email: _____

Date of birth: _____

Please review the listings on the back and enter the corresponding number(s) that best describe the following:

Occupation code: _____ Firm type code: _____

Don't Forget to join a chapter!

Enrollment form for July 2017-June 2018.
Dues rates subject to change.

NOTE: CSI membership is non-transferable and non-refundable.

Who can we thank for referring you to CSI?

Institute and Chapter Dues

See Institute dues above and chapter dues on reverse side.

Institute Dues (see types of membership to the left) \$ _____

Home Chapter Name (see reverse)..... \$ _____

Additional Chapter(s) Name(s)..... \$ _____

Membership Certificate (optional)..... \$ 15.00

Total (US funds only) \$ _____

Signature* _____

*Required to validate your enrollment form.

Visa Mastercard AMEX Check (Payable to CSI—please specify "Member Dues" and if renewing membership include member ID on memo line.)

Card # _____ Exp Date _____

Signature* _____ Amount \$ _____

*Signature required for credit card authorization.