

# the Platform

the CSI Metro NY Monthly Newsletter

February 2020



[www.csimetrony.com](http://www.csimetrony.com)



# Welcome to the **Platform**

We are pleased to share with you, the **inaugural issue** of the CSI Metro New York monthly newsletter: **the Platform...**

**the Platform** will be a monthly email correspondence to all Chapter members providing insight into all information CSI Metro NY as well as insight to activities of CSI Northeast Region and CSI National...

## February in NYC...



### LINKS

**Institute Website:**  
[csiresources.org](http://csiresources.org)

**Northeast Region Website:**  
[nercsi.com](http://nercsi.com)

**NY Metro Chapter Website:**  
[csimetrony.com](http://csimetrony.com)

### INSIDE THIS ISSUE

CSI Metro Game Plan	3
President's Letter	4
Event Calendar	5-6
This Month's Program	7
Upcoming Events	8-11
Board Members	12
Committees	13-14
Member Profiles	15-17
Chapter News Clips	18
Event Gallery	19-23
Feature Article	24-26
In the Works	27-32
Membership	33-34

# CSI Metro NY...



## our **Mission:**

To advance building information management and education of project teams to improve facility performance...



## our **Make-Up:**

A mixture of professionals including Architects, Designers, Specifiers, Product Manufacturers & Suppliers, Consultant Partners, Contractors, and Facility Managers & Owners...



## our **Plan:**

Leverage the expertise of our diverse membership via innovative & interactive learning programs...

Build trusting relationships with industry partners to explore new methodologies for delivery of projects...

Become active and recognized participants in fueling positive change in the communities in which we work and live in...

## a message from the **President...**

It's a new year and time for a fresh start. If you have already made some New Year's resolutions how about adding participation in the Metro NY CSI to the list.

The chapter board & committee members are working hard to expand our programs & events to involve more components of the construction industry. Programs that are of interest and value to architects, specifiers, product representatives, general contractors, subcontractors, facility owners, facility managers, etc.

Here is a list of what have done in the recent past and some of the meetings and events planned for 2020.

### **What's happened:**

- September: A Walking tour of the Highline
- October: A project tour of the "Museum of the Dog"
- November: A construction tour of the Moynihan Train Station
- December: Our Holiday Party
- January: Construction Draft Day presentation with Structure Tone

### **What's in the Event Pipeline:**

- February 12, 2020: Miller ~~Blaker~~ millwork factory tour.
- March 11, 2020: Chapter Meeting "Engineering Coordination, the BIM Way"
- April 8, 2020: Chapter Meeting "What's My Line"
- May 13, 2020: Chapter Meeting "Get a Glimpse of What's Behind the CSI Curtain...an evening with CSI CEO Mark Dorsey"
- June 4, 2020: Our Annual Joint MNY & LI CSI Golf Outing
- June 10, 2020: Our Annual Day of Learning followed by our Awards Dinner
- July 15, 2020: Summer Board Meeting.
- July 23, 2020: Group Outing – Royal Palms Shuffleboard Club

### **What's new:**

- Our Newsletter "THE PLATFORM"

### **What's on the drawing board:**

- Advertising Opportunities.
- Product Representative Specification Section database for specifiers.
- Scholarship competition.

### **So you ask, how can I get involved?**

- Attend chapter meetings and events
- Attend board meetings
- Sponsor a meeting
- Take a ~~tabletop~~ at a monthly meeting.
- Join a committee.
- Chair a committee.
- Help develop a chapter program
- Organize a chapter social event.
- Help us network with other organizations
- Get us involved with our local community.

The chapter is here to serve you, our membership, and we are motivated to continue adding value to the **Membership Experience!**

So join us in the adventure...

---

Kenneth Raikowski, AHC, CSI  
President - Metro New York Chapter CSI

# the CSI Metro New York Chapter **Event Calendar** 2019/2020

**Note:** All events , dates and locations are tentative and may be changed as necessary...Website and Newsletter will be updated on a monthly basis.

**Thursday, September 19, 2019:**

[Take a Walk on the High Line](#)

*Tour Starts at the Gansevoort Entrance @ 6:00pm*

**Wednesday, October 9 – Friday, October 11, 2019:**

[Construct 2019](#)

*National Harbor, Maryland*

**Wednesday, October 16, 2019:**

[AKC Museum of the Dog Tour](#)

*101 Park Avenue, NYC*

**Wednesday, November 16, 2019:**

[Moynihan Train Hall](#)

*9<sup>th</sup> Avenue Construction Site Entrance*

**Wednesday, December 11, 2019:**

[Happy Holidays! Our Annual Holiday Party](#)

*House of Lasagna*

**Wednesday, January 8, 2020:**

[Construction Draft Day...](#)

[Subcontractor/Vendor Selection: How does the GC Make the Pick?](#)

*Offices of Structure Tone, 330 West 34<sup>th</sup> Street, NYC*

**Wednesday, February 12, 2020:**

[Miller Blaker Factory Tour](#)

*620 East 132<sup>nd</sup> Street, the Bronx*

# the CSI Metro New York Chapter **Event Calendar** 2019/2020

**Wednesday, March 11, 2020:**

Engineering Coordination the BIM-Way

*Offices of WSP Engineers, One Penn Plaza, NYC*

**Wednesday, April 8, 2020:**

What's My Line?

*Carvart Showroom, TBD*

**Wednesday, May 16, 2020:**

Pay Attention to What's Behind the Curtain...

Get the CSI Inside Story from CEO Mark Dorsey

*Location, TBD*

**Wednesday, June 4, 2020:**

FORE! Annual CSI Metro NY Golf Outing

*South Shore Golf Club, Staten Island*

**Wednesday, June 10, 2020:**

Annual Learning Day & Awards Dinner

*Location to be Determined*

**Wednesday, July 15, 2020:**

Summer Planning Meeting #1

*Hafele Showroom, TBD*

**Wednesday, July 23, 2020:**

New Member Event/Group Outing

*The Royal Palms Shuffleboard Club, 514 Union Street, Brooklyn, TBD*

**Wednesday, August 12, 2020:**

Summer Planning Meeting #2

*Offices of Gensler, TBD*

# the February Chapter Event



**CSI**  
Metropolitan New York Chapter  
Program Committee

**tour size is limited to 40 persons...**  
register on our website @ [www.csimetrony.com](http://www.csimetrony.com)  
registration is required in advance...

## my life as a tree...

join us for a behind-the-scenes look into the operations of one of the  
**New York Market's Premier Architectural Woodworking companies**  
**Miller Blaker...**

get insight to how old-school techniques and new-school technologies are employed in  
the design, fabrication + installation of high-end architectural millwork...

**Where:** Miller Blaker  
620 East 132 Street, Bronx, NY

**When:** Wednesday, February 12, 2020  
8:30am meet @ Miller Blaker

**Cost:** Free for CSI Metro NY Members  
Non-Members \$25

## Event Info:

We will meet up at Miller Blaker factory at 620 East 132<sup>nd</sup> Street in the Bronx at 10:30am

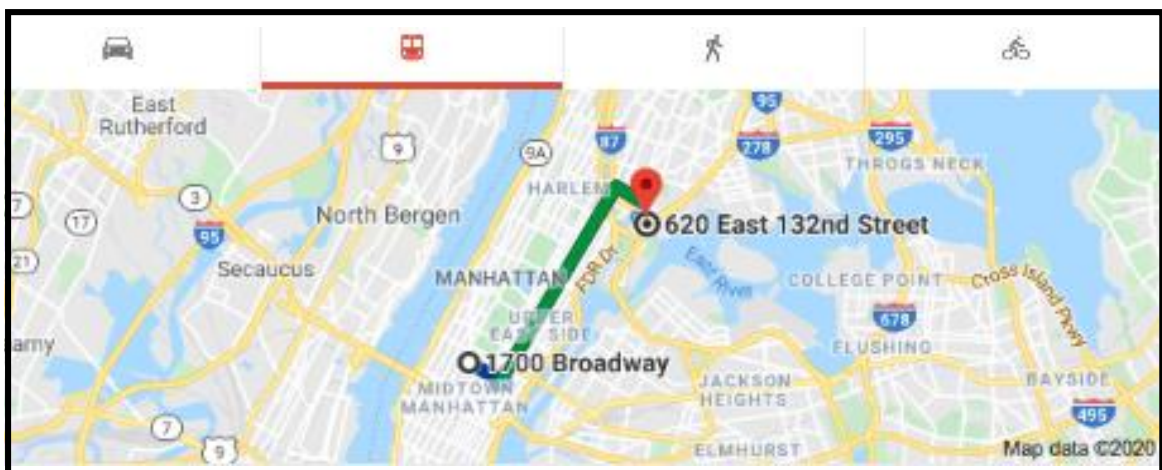
Best mode of transportation will be the 6-train to Brook Avenue Station

It is about a 10-minute walk from there to Miller Blaker

Parking is very limited

Need to register on our Chapter Website [www.csimetrony.com](http://www.csimetrony.com) by 5:30pm on Monday, February 10<sup>th</sup>

For additional information reach out to Tom Lanzelotti at [tom\\_lanzelotti@gensler.com](mailto:tom_lanzelotti@gensler.com)



# the CSI Metro New York Chapter **Upcoming Events**

## the **March Event:**

# Consultant Coordination

**does BIM hold the Keys to Success...**

join us for a **multi-discipline** dive into the world of **consultant coordination** to discuss how **technology** is impacting the conversations...



**Where:** the Offices of WSP  
One Penn Plaza, 4<sup>th</sup> Floor

**When:** Wednesday, April 8, 2020  
5:30-7:30pm

**Cost:** free for CSI Members  
\$25 for non-members



## the **April Event:**



### the CSI Metro NY Chapter Version

Be one of our "celebrity" guest questioners:  
...let's see if the wool is going to be pulled over your eyes?

**join us as we re-create the iconic television game show with a twist...**

its based upon the **AIA A201** roles & responsibilities for the **Owner**, the **Contractor** and the **Architect**...

- ❖ Game #1: Who's the Owner?
- ❖ Game #2: Who's the Contractor?
- ❖ Game #3: Who's the Architect?



**Where:** Carvart Showroom  
1441 Broadway, NYC  
28<sup>th</sup> Floor

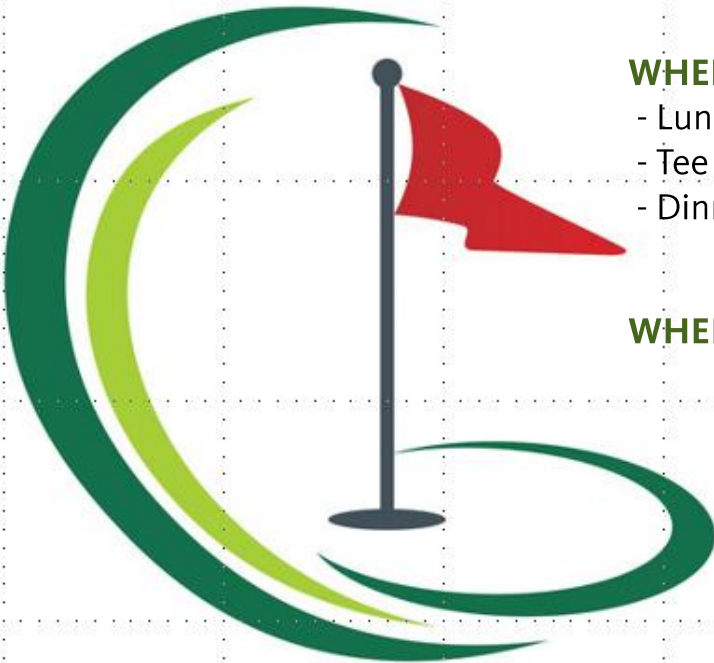
**Where:** Wednesday, April 8, 2020  
5:30-7:30pm

**Cost:** free for CSI Members  
\$25 for non-members



## the CSI Metro New York Chapter **Upcoming Events**

### the **Annual Golf Outing:**



**WHEN:** Tuesday, June 4, 2020

- Lunch @ 11:30am
- Tee Off @ 1:30pm
- Dinner @ 6:00pm

**WHERE:** South Shore Golf Course  
200 Huguenot Avenue  
Staten Island, NY

For additional information please contact Arnie Kravitz @ [arnold.kravitz@dormakaba.com](mailto:arnold.kravitz@dormakaba.com)

### the **Cadigan Cup:**

To honor the tireless efforts of Les Cadigan in establishing our Annual Golf Outing, the Winner's Trophy carries his name.

### the **Frybergh Scholarship** program:

To honor the memory of Francis L. Frybergh for his tireless efforts on behalf of the Metro NY Chapter, this Memorial Scholarship was established.

The recipient shall be an outstanding student from an architectural or construction program at one of the colleges within the Chapter's domain.

Anyone interested in applying for the Frybergh Scholarship should contact Ken Raikowski, out chapter President at [Kenneth.Raikowski@assabloy.com](mailto:Kenneth.Raikowski@assabloy.com)

# the CSI Metro New York Chapter **Upcoming Events**

## the **Annual Golf Outing Sponsorship Opportunities:**



**Individual Golfer**  
\$275



**Foursome**  
\$900



**Dinner Only**  
\$125



**Gold Sponsor**  
\$2,750 includes  
2 Foresomes &  
Hole Sponsorship



**Silver Sponsor**  
\$2,250 includes  
1 Foresome &  
Contest Hole



**Bronze Sponsor**  
\$1,750 includes 1  
Foresome & Hole  
Sponsorship



**Hole Sponsor**  
\$200



**Putting Contest**  
\$1,000 (table top)



**Cart Sponsor**  
\$500 (4 available)



**Surprise Prize**  
\$400



**Lunch Sponsor**  
\$1,000



**Snacks at Turn**  
\$300 (2 available)



**Dinner Sponsor**  
\$1,000

# the CSI Metro New York Chapter **Golf Outing Application**

**Don't miss out. Get your reservations and sponsorships in now**

**You can pay by credit card on the chapter web site**

<http://www.csimetrony.com/golf-outing>

For Additional Information Please Contact;  
Arnie Kravitz – [arnold.kravitz@dormakaba.com](mailto:arnold.kravitz@dormakaba.com)

## **2020 Metro NY / Long Island CSI Golf Outing Registration Form**

Name: \_\_\_\_\_

Company: \_\_\_\_\_

E-mail: \_\_\_\_\_

Phone: \_\_\_\_\_

Category	Qty.	Amount	Extension

**Total:** \_\_\_\_\_

All Members are asked to donate whatever company give a-ways they would like. We are going to make up gift bags to give to all golfers. We would like to have items from both professional and trade members. Please make sure to send at least 120 pieces. You can send all checks and give ~~aways~~ aways to;

**Kenneth Raikowski**  
64 Prince Lane |  
Westbury NY 11690  
Tel: 516- 236-6779  
[kenneth.raikowski@assaabloy.com](mailto:kenneth.raikowski@assaabloy.com)

**By Credit Card:** Name on Card: \_\_\_\_\_

Card: Master Card/ Visa/ American Express - \_\_\_\_\_ Billing Zip Code \_\_\_\_\_

Card Number: \_\_\_\_\_ Expiration Date: \_\_\_\_\_ Security Code: \_\_\_\_\_

**Or mail a check made payable to "Long Island Chapter CSI"**

# meet the CSI Metro New York Chapter **Board**



**President**  
Ken Raikowski  
[Kenneth.Raikowski@assaabloy.com](mailto:Kenneth.Raikowski@assaabloy.com)



**Vice President**  
Andrea Dinice  
[andrea.dinice@sherwin.com](mailto:andrea.dinice@sherwin.com)



**Vice President**  
Jeremy Douglas  
[JeremyD@h-b.com](mailto:JeremyD@h-b.com)



**Secretary**  
Tali Cheses  
[tali\\_cheses@gensler.com](mailto:tali_cheses@gensler.com)



**Treasurer**  
Arnie Kravitz  
[arnold.kravitz@dormakaba.com](mailto:arnold.kravitz@dormakaba.com)



**Director**  
Tom Lanzelotti  
[tom\\_lanzelotti@gensler.com](mailto:tom_lanzelotti@gensler.com)



**Director**  
John Umbach  
[John.umbach@gmail.com](mailto:John.umbach@gmail.com)



**Director**  
Renee Pecquex  
[Renee.Pecquex@ceasarstoneus.com](mailto:Renee.Pecquex@ceasarstoneus.com)



**Director**  
Dan Reidy  
[dreidy@behrpaint.com](mailto:dreidy@behrpaint.com)



**Immediate Past President**  
Oliver Wilhelm  
[oliver@cybulwilhelm.com](mailto:oliver@cybulwilhelm.com)



**NE Region Director**  
Bill DuBois  
[bill\\_dubois@gensler.com](mailto:bill_dubois@gensler.com)

# the CSI Metro New York Chapter **Committees**

## **MEMBERSHIP:**



Andrea Dinice, *Chair*      [andrea.dinice@sherwin.com](mailto:andrea.dinice@sherwin.com)

The **Membership** Committee recruits new members and works at retaining existing members. This committee works with the House/Program Committee to produce special programs to appeal to particular segments of the design/construction industry.

## **PROGRAMS:**



Tom Lanzelotti, *Chair*      [tom\\_lanzelotti@gensler.com](mailto:tom_lanzelotti@gensler.com)

The **Programs** Committee develops programs for the monthly meetings, inviting speakers, making arrangements for those speakers and promoting the programs in advance.

## **HOUSE:**



Bill DuBois, *Chair*      [bill\\_dubois@gensler.com](mailto:bill_dubois@gensler.com)

The **House** Committee makes arrangements with meeting venues, receives & processes reservations & payments, coordinates venue set-up, oversees activities at our Chapter Meetings, and welcomes attendees to our Chapter Meetings.

## **AUDIT / FINANCE:**



Tom Scriven, *Chair*      [tom@empiresalesgroup.net](mailto:tom@empiresalesgroup.net)

The **Audit** Committee provides an independent review of the work of the Treasurer after the conclusion of each fiscal year, reporting its findings to the Board of Directors.

The **Finance** Committee advises the Board of Directors of fiscal policy and on investments of the Chapter's assets.

## **BY-LAWS:**



Michael Bean, *Chair*      [mbean1313@gmail.com](mailto:mbean1313@gmail.com)

The **By-Laws** Committee provided guidance to the Board of Directors regarding matters involving the Institute and Chapter By-Laws.

## **GOLF:**



Arnie Kravitz, *Chair*      [arnold.kravitz@dormakaba.com](mailto:arnold.kravitz@dormakaba.com)

The **Golf** Committee organizes and administers the annual golf outing which is a fundraiser for the Francis L. Frybergh Scholarship. This committee solicits donations for individuals and companies in support of the scholarship.

## **PROFESSIONAL DEVELOPMENT / CERTIFICATION:**



Tali Cheses, *Chair*      [tali.cheses@gensler.com](mailto:tali.cheses@gensler.com)

The **Professional Development / Certification Committee** promotes CSI Certifications within the Chapter and the New York City area construction and design industry. Study programs for exams are organized and offered to coincide with Certification Exam schedules.

# the CSI Metro New York Chapter **Committees**

## **NOMINATING:**



TBD by Previous Year's Nominating Committee, *Chair*

The **Nominating** Committee recruits and proposes leaders to the Board of Directors for inclusion on the annual ballot for election of Chapter Officers.

## **PLANNING:**



Bill DuBois, *Chair*      [bill\\_dubois@gensler.com](mailto:bill_dubois@gensler.com)

The **Planning** Committee coordinates the planning of Chapter activities for the upcoming year.

## **AWARDS:**



Tom Lanzelotti, *Chair*      [tom\\_lanzelotti@gensler.com](mailto:tom_lanzelotti@gensler.com)

The **Awards** Committee makes arrangements with meeting venues, receives & processes reservations & payments, coordinates venue set-up, oversees activities at our Chapter Meetings, and welcomes attendees to our Chapter Meetings.

## **COMMUNICATION:**



Han-Hui Ling, *Chair*      [hling@henry.com](mailto:hling@henry.com)

The **Communication** Committee organizes communication strategies to the membership via the Chapter Website and Chapter Newsletter as well as notifying the membership of events via Constant Contact.

## the CSI Metro New York Chapter **Member Profiles**



Each month we will provide **Member Profiles** to celebrate accomplishments, put a face to a name, and just get to know each other a little better...

If you would like to be featured in our Member Profile page, please reach out to our Chapter Membership Chair, Andrea Dinice at [andrea.dinice@sherwin.com](mailto:andrea.dinice@sherwin.com)



### **Tom Scriven CSI, CDT, CCPR:**

Tom Scriven has lived his whole life in the New York-New Jersey Metropolitan Area. Tom graduated from the New Jersey Institute of Technology in 1981 with a BS in Industrial Engineering.

Tom has had various jobs in the Construction Sales area including wholesaler, manufacturer and currently independent sales agent. Since 1996, Tom has been President of The Empire Sales Group who are Metro New York's top sales agent in the building envelope and insulation field. Empire Sales specializes in Division 07 thermal and moisture protection, specifically insulation energy codes and installation guidelines.

Tom has been a member of the Metro NY Chapter of the Construction Specifications Institute since 1997 and has served on several local committees. Tom was the Metro NY Chapter Treasurer during the years 2015-2017 and since 2018, Tom has been the Treasurer and a Board Member of the CSI Northeast Region. Tom is also the Treasurer and a Board Member of the International Institute of Building Enclosure Consultants (IIBEC) since 2018. Tom enjoys serving on industry committees and being involved in mentorship programs.

Tom is happily married since 1997, has a terrific son, daughter-in-law, and two awesome grandsons.

## the CSI Metro New York Chapter **Member Profiles**



### **George Sirinakis, CSI, AIA:**

George Sirinakis is a licensed architect with more than 30-years of experience in residential and commercial architecture. After graduating from Syracuse University, he began his career in the realm of corporate interiors, in NYC, and steadily expanded his skillset by working for a variety of small and mid-sized firms and construction management companies in the Tri-State area. He established his own firm, GS Architect (SGA), in the mid-90's and has specialized in luxury single-family residential and commercial architecture and has had the good fortune to partner with prominent architects, builders, and interior designers throughout his career.

GSA's footprint spans over decades of commercial, hospitality, and residential work both in the private and public sectors; helping design corporate interiors for major law and financial firms, and working with city agencies like the NYC Housing and Urban Development and the School Construction Authority to execute multi-million dollar modernizations and fit-outs throughout the city. George transitioned to hospitality and residential architecture later in his career and collaborated with a renowned interior designer in Greenwich, CT renovating single-family homes and catering to discerning clientele in Fairfield and Westchester counties.

Currently, George is working as a Senior Project Manager with DCCW Architects, a firm with a diverse architectural portfolio of industrial projects specializing in cold-chain food storage and distribution; multi-family housing; and retail. He is a team leader and mentor, integral to the design and construction document process of the firm.

## the CSI Metro New York Chapter **Member Profiles**



### **Kaley Blackstock, CSI, CDT, LEED & WELL AP:**

Kaley Blackstock is a Sustainability Specialist with Gensler and works with design team to reduce the environmental and human health impacts of Gensler projects. She brings a holistic and interdisciplinary approach to developing sustainable design strategies, from high performance systems integration for new buildings to design and construction guidelines for clients' real estate portfolios.

Kaley has a passion for understanding material performance with an expertise in sustainable products. Under the guidance of her mentor Bill DuBois, Kaley is expanding her knowledge and skills to become a specifier for Gensler New York Office. Additionally, she aims to optimize material selection practices, exploring new techniques and technologies for data collection management.

Kaley also leads the firm's Sustainable Materials Resource Group, a group of Gensler designers and specifiers focused on advancing the firm's knowledge around materials. She is a member of the Grace Farms Foundation Architecture + Construction Working Group, a multidisciplinary task force developing tools and resources to eliminate slavery from the design and construction industry. She is an active member of Harvard's Graduate School of Design Alumni Council, aiding in the strengthening of connections between students and alumni.

Originally from Tulsa, Oklahoma, Kaley is a graduate of Harvard College and has a Masters in Architecture from the Harvard Graduate School of Design.

She works with clients such as Google, the Bank of America, the Durst Organization, and the Selfridges Group. Though passionate about her work, Kaley's true love is spending time with her dog Pepper and hitting the links.

# the CSI Metro New York Chapter News Clips

## **BOARD MEETING SCHEDULE:**

THE CSI METRO NEW YORK BOARD MEETS QUARTERLY TO REVIEW COMMITTEE ACTIVITIES; SHARE UPDATES FROM THE REGION AND INSTITUTE; REVIEW FEEDBACK FROM THE CHAPTER; PREPARE MESSAGING TO THE CHAPTER; AND COORDINATE/PLAN UPCOMMING EVENTS...

BOARD MEETINGS ARE OPEN AND ATTENDANCE BY CHAPTER MEMBERS IS WELCOMED...BOARD MEETING NOTES WILL BE POSTED ON THE CHAPTER WEBSITE FOR REVIEW BY ALL MEMBERS...

TO PROPOSE TOPICS FOR BOARD DISCUSSION, CHAPTER MEMBERS CAN UTILIZE THE CSI BOARD MEETING RECOMMENDATION TEMPLATE FORM LOCATED ON THE CHAPTER WEBSITE [www.csimetrony.com](http://www.csimetrony.com) UNDER THE TOOLS AND RESOURCES TAB...

NEXT BOARD MEETING IS SCHEDULED FOR WEDNESDAY, FEBRUARY 12, 2020 FROM 5:30pm-8:00pm; LOCATION TO BE DETERMINED...

## **NORTHEAST REGION CSI CONFERENCE & TRADE SHOW:**

EACH YEAR, A REGIONAL CONFERENCE IS HELD AND MEMBERS FROM THE 15 REGIONAL CHAPTERS GATHER FOR NETWORKING, EDUCATION, AND LEADERSHIP DEVELOPMENT...THE CONFERENCE THEME IS "LEARNING FORM THE PAST TO CREATE A BETTER FUTURE"

- WHEN: MAY 28-30, 2020
- WHERE: PLYMOUTH, MA
- HOST CHAPTER: BOSTON

IF YOU ARE INTERESTED IN ATTENDING OR FOR ADDITIONAL INFORMATION, PLEASE REACH OUT TO OUR CHAPTER NE REGION DIRECTOR BILL DUBOIS AT [bill\\_dubois@gensler.com](mailto:bill_dubois@gensler.com)

## **CONSTRUCT 2020:**

AN AEC EDUCATIONAL PROGRAM AND EXHIBITION THAT BRINGS TOGETHER THE DIFFERENT DISCIPLINES WITHING THE CONSTRUCTION INDUSTRY TO FOCUS ON IMPROVING THE FUTURE OF THE BUILT ENVIRONMENT...

- WHEN: SEPTEMBER 30 – OCTOBER 2, 2020
- WHERE: GAYLORD TEXAN RESORT & CONVENTION CENTER, GRAPEVINE, TX

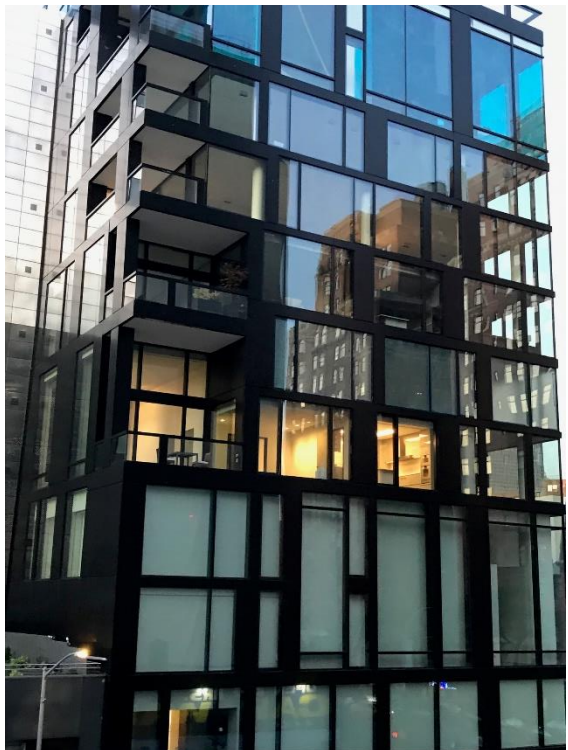
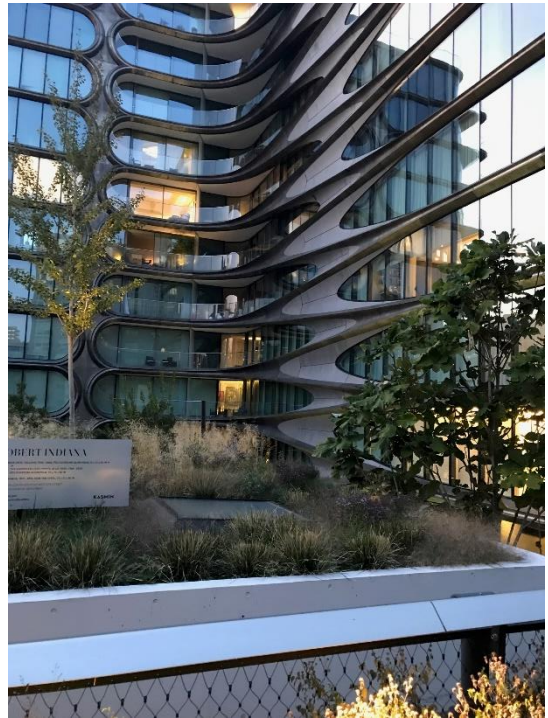
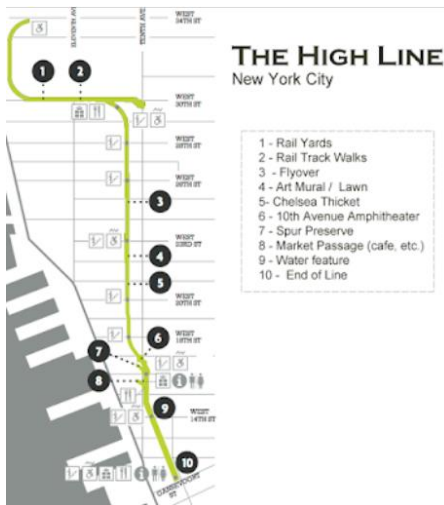
IF YOU WOULD LIKE MORE INFORMATION REGARDING CONSTRUCT 2020 PLEASE REACH OUT TO OUR CHAPTER PROGRAMS CHAIR, TOM LANZELOTTI AT [tom\\_lanzelotti@gensler.com](mailto:tom_lanzelotti@gensler.com)

# the CSI Metro New York Chapter Past Events Gallery



**HIGHLINE WALKING TOUR**  
*Wednesday, September 19, 2019:*

Thanks to OUR TOUR SPONSOR:



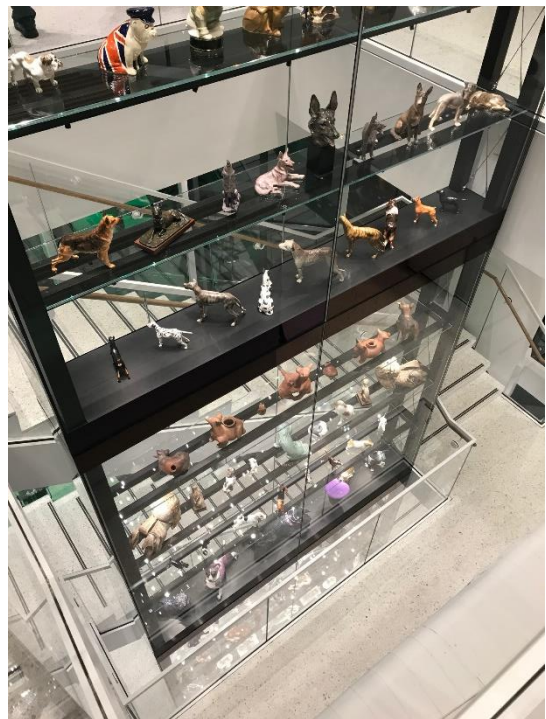
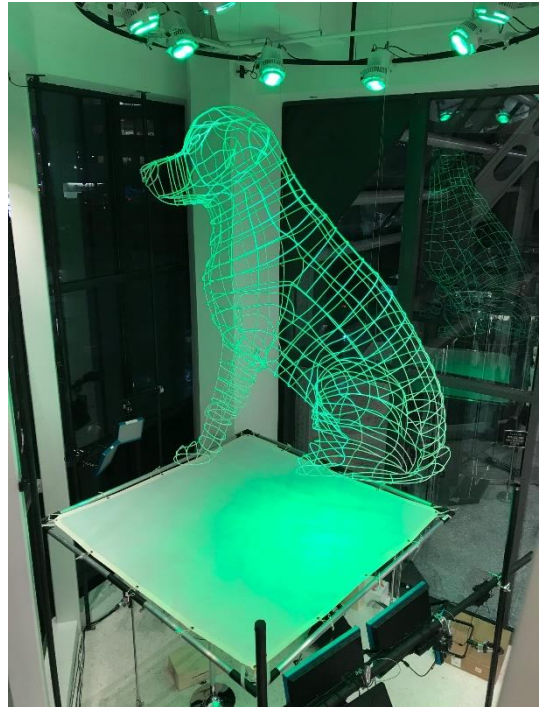
# the CSI Metro New York Chapter Past Events Gallery



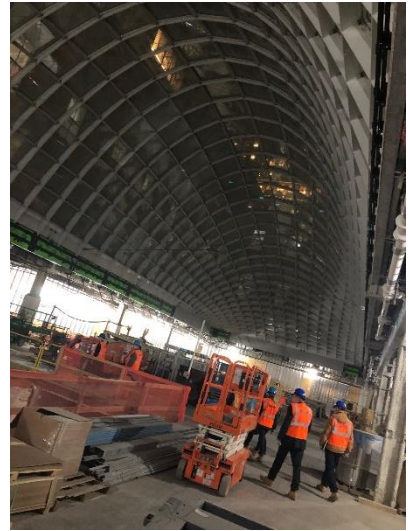
Wednesday, October 16, 2019:

## SPECIAL THANKS:

- Jan Gross / Gensler
- sfddsafds / Museum of the Dog
- fdsfdfa / AKC



# the CSI Metro New York Chapter Past Events Gallery



**MOYNIHAN TRAIN HALL  
CONSTRUCTION TOUR**  
*Wednesday, November 13, 2019:*



**Certificate of Completion**



**SPECIAL THANKS TO OUR  
TOUR HOSTS & GUIDES:**

**SOM**

**SKANSKA**



# the CSI Metro New York Chapter Past Events Gallery



**OUR ANNUAL HOLIDAY PARTY...**  
*Wednesday, December 13, 2019*

SPECIAL THANKS TO OUR **HOLIDAY PARTY** SPONSORS:

**ASSA ABLOY**

**dormakaba**

**HB** HOHMANN & BARNARD, INC. **MiTek**

**PPG**

**gcp**  
applied technologies

**SHERWIN WILLIAMS.**

**S·Y·L·V·E·S·T·E·R**  
**ASSOCIATES LTD.**

# the CSI Metro New York Chapter Past Events Gallery



**CONTRACTOR DRAFT DAY:...**  
*Wednesday, January 8, 2019*

## SPECIAL THANKS TO OUR HOST & PRESENTERS:



**Dan Finnegan**  
**Dave Hamilton**  
**Ed Rowan**

## SPECIAL THANKS TO OUR FOOD SPONSOR:



**Certificate of Completion**

### Learning Objectives:

- #01: Explain the importance of the **Subcontractor Pre-Qualification Process** in establishing a base level of quality and experience level for the performance of the work.
- #02: Describe how the **Subcontractor Bid Analysis Process** works and its value in assuring products and trades selected to deliver the project work have a complete understanding of the documented design intent.
- #03: Explore how the **Value Engineering/Cost Savings Process** during the bidding phase can provide added value to the Client with respect to budget and schedule implications.
- #04: Discuss the **Product Submittal Process**, identifying the roles of the various team members (Design Professionals, Product Suppliers/Manufacturers, Subcontractors/Installers, and Contractor) and the potential value of properly prepared submittals and substitution requests.



# the CSI Metro New York Chapter **Feature Articles**

## **a Construct Story** by Tom Lanzelotti



Every year, I get asked the question...  
"What is the **real value** in attending Construct?"

This is a tough question since I don't think there is a singular answer to the question...But, the question has led me to taking some time to place the craziness on pause and think back upon my Construct experiences:

**Chicago 2011:** My first Construct...My CSI Mentor Bill DuBois convinced me to go...Always liking Chicago as a destination I decided to make the trek as I had just become a Chapter Director and the Membership Committee Chair. Bill introduced me to so many people including Kirby Davis, from the Dallas Chapter...I didn't have dinner plans one of the nights and Kirby asked me to join her for dinner with the members from her chapter what were at the conference...It was a great evening that gave me **insight** into the bigger picture of CSI and into the inner workings of how another growing chapter was functioning.

**Phoenix 2012:** It was a year later...I was now entrenched as part of our Metro NY Chapter Leadership...We had some really good things brewing...We moved our meetings to Showrooms, We introduced Membership ID Cards, We had engaging programs, We were seeing membership growth via a strong membership Experience...I was excited to **share** what we were doing similar to what I was exposed to a year earlier in Chicago during my dinner with the Dallas Chapter...I also made the decision that as a Chapter Leader, it was important to **lead by example** and that Construct would be an annual pilgrimage moving forward.

**Nashville 2013:** I had never been to Nashville so I was excited to experience Music City...I was now our Chapter Vice President and Membership Chair...The highlight of my Nashville journey was the Keynote Address by a gentleman named Ira Blumenthal...His address was built around the Bob Dylan song "The Times They Are A Changing". It was a banjo pickin', harmonica tootin' look into pushing past the status quo and embracing change. We were riding a bit of a high as a chapter but, as Ira pointed out, it was important to not rest on our laurels and to really look hard into the ever-changing dynamic of our Design + Construction industry and **being open to experimentation and learning from the next generation of leaders.**

# the CSI Metro New York Chapter Feature Articles

**Baltimore 2014:** In Baltimore, I had the pleasure of experiencing Construct with my CSI Mentor Bill DuBois and my oldest professional friend Oliver Wilhelm. I had been talking up the value of CSI to Oliver for a couple of years and after sitting on the fence for a bit, he made the leap of faith and joined our chapter and hasn't stopped running since becoming a board member and a Chapter President in a short period of time. Let me tell you, there is nothing like an 11:00pm car ride from Baltimore to New York with good friends to stimulate great conversation...**Seeing the CSI light go** on in Oliver's eyes brought me back to Chicago where I felt that same internal fire...A CSI with good friends was an even better CSI!

**St. Louis 2015:** We were in the Gateway to the West and the theme of the Conference was "Designing a Better World" I looked back at my notes from that conference and realized how relevant some comments from the General Session that year still are...the Institute President was a "Buckeye", Lane Beougher offered the notion of providing opportunities for our members to say "YES"...Mark Dorsey was introduced as the New Executive Director for CSI and he got right to the heart of the matter that in order for CSI to maintain relevance and value, we may need to **make CHANGE that is for the BETTER but maybe not always POPULAR**...and Keynote speaker Tom Koulopoulos spoke of the importance of **changing the LENS** in which we view the world, trying to push aside our built-up bias.

**Austin 2016:** As I headed to Austin, I had taken another step in my CSI maturation as the Vice President for the Northeast Region...This was my first foray into a role beyond the Metro NY Chapter. The theme of the Austin Conference was "Beyond Limits" and as often has been the case for me, some of the words from the Keynote Speaker stuck with me. Larry Winget spoke of the "Cold, Hard, Ugly Truth About Success". Larry put an comedic twist on a serious topic that Success ain't easy, it ain't pretty and it takes talent and work. You have to **Take Responsibility**, You have to **Be Flexible**, you have to **Have Common Sense**, you have to **Get Uncomfortable** and by all means you have to **Have Some Fun**...I left thinking what great starting points for a successful chapter.

**Providence 2017:** My Providence Construct experience got cut short due to some real life issues but while again, sometimes the take-aways are not where you expect them to be...Yes, I got my fill of education and was able to meet with the product manufactures and suppliers on the floor to continue to build solid professional relationships...But the highlight of the experience was the road trip to Providence with my bud, Oliver...Just shooting the breeze and trying to figure out how we had gotten to where we were as professionals. Our career paths had taken us in different directions but, we always kept the friendship strong and have always provided professional guidance and advice to each other especially in order to continue to raise the bar on our profession. So yes, CSI is a professional organization but the inherent strength of CSI is **a foundation built upon Relationships**.

**Long Beach 2018:** From the Long Beach Meeting, I came away with the equation: **Belief + Action = Making a Difference**. I think it sums up my CSI career pretty well. I joined on a Belief instilled in me by my CSI Mentor Bill DuBois that if I didn't necessarily like the way things were, I could take Action to try and improve things and that I could in his mind Make a Difference. Bill did not let me down and I use this equation often when working with young professionals, you know the ones that are primed to change the world. So I challenge you all to reach out to the young professionals around you, and ask them to Belief and follow that belief up with Action...who knows where it can take us.

# the CSI Metro New York Chapter **Feature Articles**

**National Harbor 2019:** Without much thought and as a Metro NY Chapter Director and Program Chair, I once again made the pilgrimage to Construct. This time I boarded Amtrak for a ride south, to just outside our Nation's Capital. The conference theme was "Innovative Solutions for the Build Environment" and the conference was housed at the Gaylord National Harbor Resort. Great Venue for a conference that afforded much time and spaces to "relationship-building/strengthening". Mark Dorsey our CEO provided an update into the behind the scenes activities that have been going on to truly focus on a VIP Membership Experience and he challenged all in attendance to explore what is new and suggest what can be better. Mark also provided an update on the Dynamic Chapter Program (DCP), introduced at the Long Beach Conference and designed to assist Chapters in the design of their programs from last year and introduced a new program, the Component Value Task Force (CVTF) Program, which will explore the question of how to best align the Chapters and Regions with the Institute. I volunteered for both while at the respective conferences...**Got to Take Action to Make a Difference!**

**Grapevine, Texas 2020;** September 30th thru October 2<sup>nd</sup>  
SO you ask, why would I travel to Grapevine, Texas for Construct 2020...Here is what I can offer as an answer:

- **Gain Insight of the Bigger CSI...**
- **Lead by Example...**
- **Be Open to Experimentation and Learning...**
- **See the CSI Light Go On...**
- **Get Uncomfortable...**
- **Build Your Foundation with Relationships...**
- **Combine your Belief with Action and Make a Difference...**

We've got some exciting things happening at CSI Metro NY...I truly believe we are an organization poised to be differentiator in the Design + Construction industry...

Hope to see you at our upcoming Chapter Events and maybe even in Grapevine, Texas this September...

Tom Lanzelotti  
CSI New York Metro Chapter Director/Programs Chair

## the CSI Metro New York Chapter **In the Works...**

The success of our Chapter will always be based upon the quality of our membership experience. There are many factors that comprise the Membership Experience ranging from Institute Provided Programs; Institute Resources; Regional Communication; Dedicated Chapter Leadership; and Quality Educational Programs; but most importantly it comes down to Member Participation & Feedback. With this in mind, Starting next September the Metro NY Chapter will be piloting a formalized **Sponsorship Program** to assist in supporting the many initiatives/programs that the Board has in the works...

### **Annual Sponsorship Opportunities:**

#### **Platinum (\$1,500):**



- Company Logo displayed on chapter website
- Company Logo displayed in Monthly Newsletter (Full Page)
- Company Logo displayed on Sponsorship Banner (displayed at all CSI Metro NY events)
- Feature Article in one (1) Monthly Newsletter
- Platinum Sponsor Plaque presented at annual Awards Dinner

#### **Gold (\$1,000):**



- Company Logo displayed on chapter website
- Company Logo displayed in Monthly Newsletter (Half Page)
- Company Logo displayed on Sponsorship Banner (displayed at all CSI Metro NY events)
- Feature Article in one (1) Monthly Newsletter

#### **Silver (\$750):**



- Company Logo displayed on chapter website
- Company Logo displayed in Monthly Newsletter (Half Page)
- Feature Article in one (1) Monthly Newsletter

#### **Bronze (\$250):**



- Company Logo displayed on chapter website
- Company Logo displayed in Monthly Newsletter (Quarter Page)

# the CSI Metro New York Chapter **In the Works...**

## **Event Sponsorship Opportunities:**

### **Event Host:**



- Provide Venue for Program
- Provide Food & Beverage for Program
- Company Logo displayed on Website as Event Host
- Company Logo displayed in Newsletter as Event Host
- 5-minute presentation time at Event
- Event Host Certificate

### **Program Presenter:**



- Provide Program Content & Lead Program
- Company Logo displayed on Website as Program Presenter
- Company Logo displayed in Newsletter as Program Presenter

### **Event Table Top (\$250):**



- Table Top at Event
- 10-minute presentation at Event Social Hour

If you are interested in supporting the Chapter via one of the proposed sponsorship opportunities, please reach out to your:

- Chapter Program Chair at [tom\\_lanzelotti@gensler.com](mailto:tom_lanzelotti@gensler.com) or
- Chapter President at [Kenneth.Raikowski@assaabloy.com](mailto:Kenneth.Raikowski@assaabloy.com)

## the CSI Metro New York Chapter **In the Works...**

While we focus many of our efforts on the inner workings of our Chapter, the Board feels that it is important for us as a professional organization to also focus on how we interact with the community in which we work in and what the Exterior Face of CSI Metro NY should be.

With this in mind, Starting next September the Metro NY Chapter will be piloting a formalized **Community Outreach Program** to assist in supporting the many community based organizations in the Metro NY area. We will be looking for passionate volunteers to propose community partnerships and spearhead those efforts. Below are a few of the possible partnerships the Board has discussed...

### **Community Outreach Opportunities:**



#### **NY CARES: 212.228.5000**

- Coat Drive Program (have a collection box at our chapter events)
- Environmental Program (park clean-up project)
- Benefactor Donation



#### **ACE GNY (Greater NY) 646.757.5829**

- Provide a Mentor Team
- Provide a Donation



#### **REBUILDING TOGETHER NYC 718..488.8840**

- Heroes at Home National Rebuilding Day

## the CSI Metro New York Chapter **In the Works...**

### **Community Outreach Opportunities:**



**FOOD BANK for NYC: 212.566.7855**

- Donate Monthly
- Fundraise



**CITY HARVEST: 646.412.0600**

- Group Volunteering
- Fundraise
- Food Donor



**CANSTRUCTION New York:**

[email@CanstructionNY.org](mailto:email@CanstructionNY.org)

- Design/Build Competition Team



**American  
Red Cross**

**AMERICAN RED CROSS:  
212.RED.CROSS ext. 2067**

- Host a Blood Drive
- Financial Donation
- Volunteer Opportunities

If you are interested in supporting the Chapter via one of the proposed sponsorship opportunities, please reach out to your please reach out to your:

- Chapter Program Chair at [tom\\_lanzelotti@gensler.com](mailto:tom_lanzelotti@gensler.com) or
- Chapter President at [Kenneth.Raikowski@assaabloy.com](mailto:Kenneth.Raikowski@assaabloy.com)

## the CSI Metro New York Chapter **In the Works...**

### **One-on-One Connection Conferences:**

How do you foster intellectual relationships between the leading Design Professionals and Innovative Manufacturers/Suppliers to improve Project Delivery?



WE re-invent the Trade Show via  
**CSI Metro NY Connection Conferences**

#### **The Program Plan:**

A one-day event

Twenty (20) Participants:

- Ten (10) Manufacturers/Suppliers
- Ten (10) Design Professionals

Two Sessions:

- Morning with five (5) rotating meet-ups
- Afternoon with five (5) rotating meet-up

Sponsored by our product Manufacturer/Supplier partners

Design Professionals attend via invitation from the

Manufacturer/Supplier partners

Breakfast, Lunch, and Drinks/Dinner included

Designed to provide a one-on-one connections

#### **The hopeful outcome being:**

The development and strengthening of relationships...

The Development of enhanced and innovative solutions to raise the bar on project delivery for our clients...

If you are interested in supporting the Connection Conference as Manufacturer/Supplier partner please reach out to our Chapter Programs Chair Tom Lanzelotti at

[tom.lanzelotti@gensler.com](mailto:tom.lanzelotti@gensler.com)

# the CSI Metro New York Chapter **In the Works...**

## The Return of ID Badges:



How do you foster relationships between the leading Design Professionals and Innovative Manufacturers/Suppliers?



You help them break the ice with CSI Metro New York ID Badges...



Let others know your name and who you work for...

Let them know:

- Are you a new member (first year)...
- Are you a Chapter Board Member...
- If you are a long-term member, when did you join...



## the CSI Metro New York Chapter **So Why Join?**

**CSI...an organization comprised of a diverse, cross-sectional group of design + construction professionals focused on improving the built environment through collaboration and leveraging ideas & experience...**

### **ADVANCE** Your Career

Be confident in your role in the construction project, and earn your employer's confidence in your skills and knowledge. As a part of the CSI Community, you have added resources to earn your certificate as a Construction Document Technologist (CDT) or one of the advanced CSI certifications...

### **STAY** Up-To Date

CSI brings you the best in construction building communications, CSI's monthly peer-reviewed magazine, "The Construction Specifier", discusses the latest trends in construction building and design. CSI Weekly e-newsletter keeps you up-to-date on issues and events affecting your profession and the industry. And your local chapter keeps you current on the issues important to where you live and work...

### **CONNECT** with Colleagues

Engage with colleagues from around the world on [www.csi.resources.org](http://www.csi.resources.org), join an on-line community and your local chapter. You know how valuable it is to be a member of professionals from every facet of the industry...

### **DRIVE** the Industry

CSI volunteers develop the standards and formats that guide construction communication. They create MasterFormat, the Practice Guides, and many other projects and programs vital to the construction community. As a member of CSI, you can volunteer and drive the industry locally and nationally...

are you ready for your **VIP** Member Experience?

# the CSI Metro New York Chapter Membership Application

To join, you can go to our chapter website [www.metrony.com](http://www.metrony.com) under the Links tab to find a membership enrollment form...



**110 South Union St Ste 100  
Alexandria, VA 22314-3351**

**Phone:** 800- 689-2900

**Email:** [csi@csinet.org](mailto:csi@csinet.org)

**CSI Tax ID#:** 53-0242938

## MEMBERSHIP ENROLLMENT FORM

---

**MEMBERSHIP TYPES**

**Professional: \$275.00**  
I am a technically experienced individual whose primary function is to author, manage or communicate building information; to create, interpret or use construction documents; or to educate, support or assist the construction industry.

**Emerging Professional: \$150.00\***  
I am an individual who has less than three years experience in any construction-related field and am a prospective Professional Member.

**Student: \$50.00\***  
I am a full-time student enrolled in an undergraduate or graduate program in a construction industry curriculum at an educational institution.

*\*If selecting Emerging Professional or Student Membership, please call CSI Member Services for related chapter dues. Emerging Professional membership is limited to 3 years, at which time members must renew at the Professional level.*

**Personal Information**  Mr  Ms  Mrs  Dr

First name: \_\_\_\_\_ Middle initial: \_\_\_\_\_

Last name: \_\_\_\_\_

Title: \_\_\_\_\_

Firm name: \_\_\_\_\_

Website: \_\_\_\_\_

Address: \_\_\_\_\_

City | State | Zip: \_\_\_\_\_

Business phone: \_\_\_\_\_ Fax: \_\_\_\_\_  
( ) ( )

Email: \_\_\_\_\_

Date of birth: \_\_\_\_\_

Please review the listings on the back and enter the corresponding number(s) that best describe the following:

Occupation code: \_\_\_\_\_ Firm type code: \_\_\_\_\_

---

**Don't Forget to join a chapter!**

Enrollment form for July 2017-June 2018.  
Dues rates subject to change.

NOTE: CSI membership is non-transferable and non-refundable.

Who can we thank for referring you to CSI?

**Institute and Chapter Dues**

See Institute dues above and chapter dues on reverse side.

Institute Dues (see types of membership to the left) ..... \$ \_\_\_\_\_

Home Chapter Name (see reverse)..... \$ \_\_\_\_\_

Additional Chapter(s) Name(s)..... \$ \_\_\_\_\_

Membership Certificate (optional)..... \$ 15.00

Total (US funds only) ..... \$ \_\_\_\_\_

Signature\*..... \_\_\_\_\_  
\*Required to validate your enrollment form.

Visa  Mastercard  AMEX  Check  (Payable to CSI—please specify "Member Dues" and if renewing membership include member ID on memo line.)

Card # \_\_\_\_\_ Exp Date \_\_\_\_\_

Signature\*..... Amount \$ \_\_\_\_\_  
\*Signature required for credit card authorization.