

the Platform

the CSI Metro New York Newsletter

**FALL/EARLY WINTER
2025/2026**

September | October | November
December | January





September



December



October



January



November

LINKS

National Website:
csiresources.org

Northeast Region Website:
nercsi.com

NY Metro Chapter Website:
csimetro.com

INSIDE THIS ISSUE

CSI Metro Game Plan	3
President's Letter	4
Platinum Sponsor	5-7
Past Events – Fall	8-15
Past Events – Winter	16-19
Event Calendar	20
Black History Month	21-24
New York Build 2026	25-26
March Event	27
Behind the Scenes	28
Chapter Board	29
Chapter Committees	30-31
Showroom Partnership	32
Sponsorship Levels	33
Member Spotlight	34-35
NE Region News	36-43
National News	44-56
Why CSI Membership?	57

CSI Metro NY game plan...



our **Mission:**

To advance building information management and education of project teams to improve facility performance...



our **Make-Up:**

A mixture of professionals including Architects, Designers, Specifiers, Product Manufacturers & Suppliers, Consultant Partners, Contractors, and Facility Managers & Owners...



our **Plan:**

Leverage the expertise of our diverse membership via innovative & interactive learning programs...

Build trusting relationships with industry partners to explore new methodologies for delivery of projects...

Become active and recognized participants in fueling positive change in the communities in which we work and live in...

a message from the **President...**

As I pass the first half of my term as president of our CSI Chapter and I feel like I've only taken baby steps towards achieving my target goals for our chapter (identify & respond to membership needs; increase active membership; facilitate better communications).

We've had a busy Chapter Season, so far, with many successful events...In September we had two events, our annual golf outing on the 15th where we added to our Francis L. Frybergh Scholarship Fund and our initial Chapter Meeting of the year on the 17th at the Boffi/DePadova Showroom where we all created and delivered elevator pitches. October was busy as well as the Allegion NYC Studio hosted us on the 8th where we learned that even teamwork will not make pasta and marshmallows into suitable building materials and a number of us, made our way to Cleveland, Ohio for the CSI National Conference on the 15th-17th. On November 12th, our good friend John hosted us at the Hafele America Co. Showroom where we delivered a lively panel discussion on the promises & pitfalls of rainscreen design for (building) envelopes. We celebrated the holidays on December 9th once again at Quatorze Restaurant. We started the New Year with a tour of the ASSA ABLOY Sargent Factory in New Haven, CT on January 13th and on February 11th, we were treated to the inspirational vision of the Huntington African American Museum at the Offices of Gensler. My favorite was the elevator pitches meeting at the Boffi | DePadova Showroom because everyone opened-up and participated.

As usual the best part of our meetings is networking/socializing with other members and guests; we are all more successful and fulfilled due to the people we meet and interact with.

We continue to work on more exciting events for the remainder of the year, and I look forward to seeing you at our March event as we hear from and celebrate some of the most successful women in the Design & Construction Industry at the MetroWall Showroom on March 18th.

Thank you for your support.



Bob Drake, AIA, CSI, CCS, CCCA
Chapter President - CSI Metro New York



*special thanks to our
platinum sponsor...*

ASSA ABLOY

Opening Solutions



Passive House Article

Erin Spadavecchia, Manager
Sustainable Building Solutions at ASSA ABLOY

Phius Certified Solutions for CSI Division 08113: Hollow Metal Sustainable Solutions from ASSA ABLOY

Construction projects with Passive House goals are gaining in number across the United States. In the state of Massachusetts, Passive House strategies are an encouraged compliance pathway for both residential and commercial buildings under their stretch code. Various examples of Passive House adoption can be seen in different forms in Colorado, Michigan, New Jersey, Minnesota, Texas, Rhode Island, New York, Washington, Illinois, California, and Connecticut as well.

The reasons for implementing the principles of Passive House vary, but the rewards are abundant. “Integrating the Passive House standard into building design increases operational effectiveness, thus reducing energy consumption and utility costs (Phius).” This is accomplished through leveraging the following principles: thermal comfort as well as control of air, radiation, and moisture. Outcomes include: “...unmatched comfort, a healthy environment, undeniable value, resilient durable structures, peaceful, quiet places and a fast track to net zero (Phius).” ASSA ABLOY, the global leader in total opening solutions, has actively pursued solutions which maximize building performance through optimized thermal and energy efficient solutions to meet the needs of building materials specifiers.

Phius is a Passive House certifying body. They work with the AEC community and manufacturers to decarbonize the built environment by growing the prevalence of Passive House buildings. ASSA ABLOY received its first Phius certification, for the Trio-E door with Mercury Thermally Broken Frame, in 2024. This was a major milestone for the company and the commercial door industry, as this marked the first certification issued by Phius in the United States for a commercial hollow metal door. In late 2025, ASSA ABLOY published 55 additional Passive House certifications for door and frame assemblies. This is a significant accomplishment for the company and a commitment to our industry as specifiers are increasing looking for product solutions for Passive House projects.

Example: ASSA ABLOY’s Phius certification:



Phius Product Number: D-100264
Date Last Certified: 11/19/2025
THERM Files Available: No

Phius Certification Path: Orange Path
Valid Through: 12/31/2027
Air Leakage Test Data Available: No



PRODUCT INFORMATION

Product Name: Curries 707 HM Door, QMAX Thermally Enhanced Core, Mercury 3 Thermal Break Frame, Pemko S44 or S88 Seal & 278x292_FGPK Threshold

Manufacturer: ASSA ABLOY

Primary Frame Material: Steel

Series: 707

Operation Category: Swinging Door

Model: Curries 707 HM Door, QMAX Thermally Enhanced Core, Mercury 3 Thermal Break Frame, Pemko S44 or S88 Seal & 278x292_FGPK Threshold

Operation Type: Single Swinging Door

Glazed or Opaque: Opaque

RECOMMENDED CLIMATE ZONES *(NOTE: This information is not for use in building energy models. See next section.)*

Recommended Climate Zones and Whole-Door U-values by Zone, at Standard Model Size [Btu/hr·ft²·°F]

Climate Zone	0, 1, 2	3A	3B	3C	4A, 4B	4C, 5C	5A, 5B	6	7	8
Recommended Zones										
U-Whole-Door	0.40	0.40	0.40	0.40	0.40	0.40	0.40	0.40	0.40	0.40

Modeled Size [W x H] 37.80" x 82.28" **SHGC, Whole Door:** 0.00 **Condensation Resistance:**

COMPONENT-LEVEL PERFORMANCE DATA [IP Units] | *Compatible with building energy modeling tools*

U-COG | Center of Glass U-Values, by Climate Zone [Btu/hr·ft²·°F]

Climate Zone	0, 1, 2	3A	3B	3C	4A, 4B	4C, 5C	5A, 5B	6	7	8
U-COG Value	0.11	0.11	0.11	0.11	0.11	0.11	0.11	0.11	0.11	0.11

SHGC-COG | Center of Glass Solar Heat Gain Coefficient, All Climate Zones

0.00

Frame Parameters	Left jamb	Right jamb	Left Head	Sill
Frame Section	Left	Right	Top	Bottom
Frame Width	2.64"	2.64"	2.64"	0.51"
Frame U-Value [Btu/hr·ft ² ·°F]	0.77	0.77	0.77	1.80
Glazing-to-Frame Psi Value [Btu/hr·ft ² ·°F]	0.1924	0.1965	0.1924	0.2180
Frame-to-Wall Psi Value is dependent on the on-site installation condition. <i>(See Phius Guidebook for more details.)</i>				

Author: Erin R. Spadavecchia, Manager – Sustainable Building Solutions at ASSA ABLOY Door Security Solutions

Learn more about Phius: www.phius.org

Link to ASSA ABLOY's Phius certifications: [Door Database | Phius](#)

the CSI Metro New York Chapter
Looking back at our fall events...



the CSI Metro New York Chapter Annual Golf Outing

September 15, 2025

CSI METROPOLITAN NEW YORK CHAPTER

2025 GOLF OUTING

MONDAY SEPT 15TH
SOUTH SHORE COUNTRY CLUB

**200 HUGUENOT AVE.,
STATEN ISLAND, NY 10312**



- 11:30 AM LUNCH
- 1:30 PM TEE OFF
- 6:00 PM DINNER
- 1 COLFER - \$375
- 4 COLFERS - \$1250
- DINNER ONLY - \$200

SPONSORSHIPS

- **GOLD SPONSOR - \$4,000**
◦ INCLUDES 2 FOURSOMES & DINNER SPONSOR
- **SILVER SPONSOR - \$3,000**
◦ INCLUDES 1 FOURSOMES & HOLE SPONSORSHIP
- **BRONZE SPONSOR - \$2,000**
◦ INCLUDES 1 FOURSOMES & LUNCH SPONSOR
- **DINNER SPONSOR - \$1500**
- **LUNCH SPONSOR - \$1000**
- **PUTTING CONTEST SPONSOR - \$1,000**
- **SNACKS AT THE TURN SPONSOR - \$300**
- **CART BOY SPONSOR - \$500**
- **HOLE SPONSOR - \$200**

ALL SPONSORSHIPS GET RECOGNITION AT LUNCH AND DINNER ALONG WITH SIGNAGE



the CSI Metro New York Chapter **September Meeting** **September 17, 2025**



Movin' on Up!

1-minute can make all the difference...

Join us for an interactive evening, working with your colleagues to build your ELEVATOR PITCH...

Boffi | DePadova

Location: 99 Madison Avenue

Date: Wednesday, September 17, 2025

Time: 5:30-6:30 Social/Networking Hour
6:30-7:30 Program Event



"I attended my first CSI Metro NY event at the Boffi | DePadova showroom, and honestly, I did not expect to have that much fun. The CSI crew was super warm and welcoming, and the whole vibe made it ridiculously easy to meet people. Tons of good conversations, lots of laughs, just all-around great energy. Definitely planning to join more of these in the future!"

Manjot Singh



the CSI Metro New York Chapter September Meeting September 17, 2025



the CSI Metro New York Chapter **October Meeting** **October 8, 2025**



CSI METROPOLITAN NEW YORK CHAPTER

Mission ImPASTable...

Your mission, should you choose to accept it will be...

Come join us at the Allegion NY Studios to find out

- **Location:** 139 Fifth Avenue – 4th Flr
- **Date:** Wednesday, October 8, 2025
- **Time:** 5:30-6:30 Social/Networking
6:30-7:30 Program Event



The graphic features a dark background with a grid pattern. It includes images of yellow spaghetti being used to build a model of the Eiffel Tower, a bundle of spaghetti, a spaghetti tower, and a spaghetti fan.

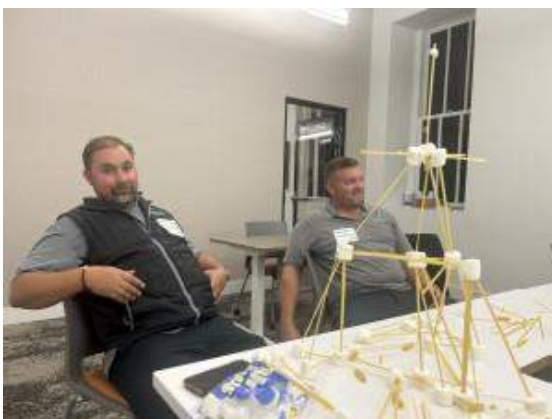


the CSI Metro New York Chapter **October Meeting** **October 8, 2025**



“We had an incredibly fun evening turning pasta and marshmallows into wild, wobbly masterpieces! It was full of laughter, friendly competition, and creative chaos that brought everyone closer together to make it possible!”

Fanch Tseng



the CSI Metro New York Chapter November Meeting

November 12, 2025



Not that Envelope... This Envelope

Join us for an interactive panel discussion with industry leaders focused on emerging trends, technologies, products, and materials influencing building envelope design

Event Logistics:

Date: Wednesday, November 12, 2025

Location: Hafele NYC Showroom
20 West 22nd Street, 2nd Floor

Time: 5:30-6:30 Networking Hour
6:30-7:30 Program

Registration:
Attendees must register by 5:30pm by Tuesday, November 11, 2025 for building security access...Register on-line at www.csimetrony.com under the Events tab.

CSI METROPOLITAN NEW YORK CHAPTER | HAFELE



the CSI Metro New York Chapter November Meeting November 12, 2025



“The profession of designing buildings requires collaboration, and that collaboration is energized by informed decisions with experts in the field of enclosures. The CSI panel of the building envelope was an example of such a discussion, where designers, specification writers, researchers, and manufacturers came together and shared their experiences in improving the design and performance of the enclosure.”

Michelle Neary

the CSI Metro New York Chapter
Looking back at our early winter events...



the CSI Metro New York Chapter **December Event**
December 9, 2025



RSVP - CSIMETRONY.COM

CSI[®] METROPOLITAN
NEW YORK
CHAPTER

HOLIDAY PARTY

• • • 9
• • • DECEMBER
• • • 5:45 PM - Cocktail Hour
• • • 6:45 PM - Dinner
• • • \$50 FOR MEMBERS
• • • \$85 FOR NON MEMBERS

• QUATORZE •
• RSVP BY DEC 4TH - CSIMETRONY.COM •

1578 1st Ave,
New York, NY 10028

the CSI Metro New York Chapter December Event

December 9, 2025



the CSI Metro New York Chapter **January Event**

January 13, 2026



“The tour of the Sargent Hardware facility was informative, inspiring, innovative, in both , emphasizing the importance of Sargent to the New Haven community and the technology behind what makes it a successful and important part of the architectural supply chain.”

George Sirinakis



the CSI Metro New York Chapter 2025/2026 Calendar



Mark your calendars & save the dates for our upcoming CSI Metro NY Schedule of Events...

- September 17, 2025 @ Boffi \ DePadova Showroom
- October 8, 2025 @ Allegion Showroom
- November 12, 2025 @ Hafele Showroom
- December 9, 2025...Holiday Party...Quatorze Restaurant
- January 13, 2026...@ Assa Abloy Factory Tour, New Haven, CT
- **February 11, 2026...@ Gensler, New York**
- **March 18, 2026... Metrowall Showroom**
- April 8, 2026...Project Tour TBD
- May 13, 2026...@ Bjarke Ingels Group (BIG)
- June 10, 2026...Member Appreciation Night...PUTTERY Mini-Golf
- July 15, 2026...Social Event Location TBD
- August 17, 2026...Social Event Location TBD

Please note programs are tentative and subject to change...

the CSI Metro New York Chapter **Upcoming Events**

Looks like Winter is gonna keep on...keeping on!



the CSI Metro New York Chapter Latest Event

February 11, 2026

For our February Chapter Event we celebrated Black History Month...



INSPIRE

Create a magnetic destination hub that celebrates African American culture and modern art, serving as a cultural center for Huntington and beyond.

EDUCATE

Uncover new perspectives through reframing untold stories of the African Diaspora and honoring unique contributions of Huntington African Americans.

EMPOWER

Welcome visitors to experience American history through an African American lens, fostering empathy and understanding—where every visitor can see their own story reflected.

LOOKING AHEAD BRINGING THE MISSION TO LIFE

*Join us for an inspiring evening with **Barry D. Lites, Esq. Chairman, Board of Directors and Tiarra Brown, Executive Director and Museum Curator** as they share the vision for the first significant African American Museum in the New York Tri-State area.*



Event Logistics:

Location: **Gensler** New York
1700 Broadway, Suite 400

Date: Wednesday, February 11, 2026

Time: 5:30 Social/Networking
6:30 Program

More information to follow on our Chapter Website www.csimetrony.com

the CSI Metro New York Chapter Latest Event

February 11, 2026



the CSI Metro New York Chapter Latest Event

February 11, 2026



*“What an inspiring evening...
The door was opened to truly
understanding how together, we as
design + construction
professionals have the opportunity
and the responsibility to assist in
supporting awareness and making
change...”*

Tom Lanzelotti

the CSI Metro New York Chapter **Upcoming Events**

We will have a Booth at New York Build 2026...Come and join us to experience a one-of-a-kind event...



Dates/Opening Times:

March 18 (Wed) 9.30am - 5.30pm

March 19 (Thurs) 9.30am - 5.00pm

Venue: Javits Center, Hall 3B, Level 3

the CSI Metro New York Chapter **Upcoming Events**

- **40,000+ registered visitors** from contractors, architects, civil engineers, developers, owners, house builders/associations, government reps and construction professionals
- **550+ incredible speakers** across 14 conference tracks including Skyscrapers & Tall Buildings, Real Estate, Architecture & Design , Digital Construction & AI, Fire Safety, Sustainability, Skills & Marketing and more
- **AIA Accredited Workshop Sessions**
- **New York's biggest Festival of Construction** with DJs, musicians, live performances, celebrity guests, entertainment and competitions
- **Architect's Hub** with project displays and 3D models of upcoming projects from leading architects across the Tri-State Area
- **Local & Global Government Hubs** showcasing opportunities for import/export
- **20+ Networking Parties** co-hosted with leading industry bodies
- The US's largest networking events for Women in Construction and Diversity in Construction
- **An inclusive Ambassador Programme** supporting Women, Diversity, Sustainability, Mental Health, Fire Safety, Digital, Young Professionals and Marketing
- **450+ exhibitors** showcasing the latest services, products and innovations transforming the industry

Register FREE Tickets: <https://forms.reg.buzz/new-york-build-2026>

New York Build Website: www.newyorkbuildexpo.com

Why Exhibit? www.newyorkbuildexpo.com/book-a-booth

New York Build 2025 Show Highlights: <https://www.youtube.com/watch?v=ITRgV0TsDjk>

the CSI Metro New York Chapter **Upcoming Events** **March 18, 2026**



Join us for our March Chapter Event as we celebrate Women in Design and Construction with a Fireside Chat hearing from a panel of exceptional women leaders as they share their heartfelt stories...

Event Logistics:

Location: ***MetroWall Showroom***
155 East 44th Street – Suite 200

Date: *Wednesday, March 18, 2026*

Time: *5:30 Social/Networking*
6:30 Program



More information to follow on our Chapter Website www.csimetrony.com

the CSI Metro New York Chapter **inner workings...**



Some of the
behind-the-scenes
elements that make it
all possible...

our 2025/2026
CSI Metro New York Chapter Board



President
Robert Drake
bob.drake@stvinc.com



Vice President
Ken Raikowski
kenneth.raikowski@assaabloy.com



Vice President
James Sines
jsines@hksinc.com



Secretary
Kori Camacho-Onal
kcamacho@enneed.com



Treasurer
Eileen Lee
eileen.i.lee@gmail.com



Immediate Past President
Oliver Wilhelm
oliver@wstudioarchitects.com



NE Region Director
Erin Spadavecchia
erin.spadavecchia@assaabloy.com



Director
Madeline Messina
madeline.messina@assaabloy.com



Director
Jacquelyn Cox
jcox@wgpaver.com



Director
Paul Fogarty
pfogarty@westwood-usa.com



Director
Fanch Tseng
fanch_tseng@gensler.com

the CSI Metro New York Chapter Committees



MEMBERSHIP:



The **Membership** Committee works to enlist new members and works at retaining existing members. This committee works with the Programs/House Committee to produce special programs to appeal to particular segments of within the design + construction industry and Allied Professionals.

Committee Members:

Oliver Wilhelm, Andrea Dinice

PROGRAMS/ HOUSE:



The **Programs/House** Committee is responsible for the planning, implementation and execution of Chapter programs and activities for the monthly meetings. This committee works with the Membership Committee to produce special programs to appeal to particular segments of within the design + construction industry and Allied Professionals.

Committee Members:

Tom Lanzelotti, Fanch Tseng, Kori Camacho-Onal, Jacquelyn Cox

OUTREACH:



The **Outreach** Committee is comprised of four sub-committees: Communication, Newsletter, Social Media, and Website. This committee promotes activities within the Chapter and the New York City Metro Area Design + Construction industry and Allied Professionals.

Committee Members:

Elizabeth Kahen, Tom Lanzelotti, Fanch Tseng, Erin Spadavecchia, Kori Camacho-Onal, Andrea Dinice, Bob Drake

FINANCE:



The **Finance** Committee advises the Board of Directors on fiscal policy and on investments of the Chapter's assets to ensure the proper handling and reporting of the fiscal transactions of the Treasurer.

Committee Members:

Eileen Lee, Tom Scriven

BY-LAWS:



The **By-Laws** Committee provides guidance to the Board of Directors regarding matters involving the Institute, Region and Chapter By-Laws.

Committee Members:

Tom Scriven, Michael Bean, Ken Raikowski, Oliver Wilhelm

the CSI Metro New York Chapter Committees

FUND RAISING:



The **Fund Raising** Committee is comprised of three sub-committees: Golf, Scholarship, and Sponsorship. The Golf sub-committee organizes and administers the annual golf outing which is a fundraiser for the Francis L. Frybergh Scholarship. The Scholarship Sub-committee administers the application process for the various Chapter Scholarships. The Sponsorship sub-committee recruits/maintains relationships with Chapter Sponsors.

Committee Members:

Golf: *Arnie Kravitz, Ken Raikowski*

Scholarship: *Kori Camacho-Onal, Tom Lanzelotti*

Sponsorship: *Elizabeth Kahan, Bob Drake*

PROFESSIONAL DEVELOPMENT:



The **Professional Development** Committee provides support for those who are studying for CSI Certification Exams (CDT, CCCS, CCCA & CCPR).

Committee Members:

Kori Camacho-Onal, Oliver Wilhelm, Tom Lanzelotti



The **Nominating** Committee recruits and proposes leaders to the Board of Directors for inclusion on the annual ballot for election of Chapter and Region Officers. This is a special committee with members selected/appointed as per the Chapter By-Laws.

PLANNING:



The **Planning** Committee coordinates the annual planning Meetings of Board Members & Committee Members to plan the Chapter activities for the upcoming year.

Committee Members:

Bob Drake, Oliver Wilhelm, Kori Camacho-Onal, Tom Lanzelotti

AWARDS:



The **Awards** Committee reviews the achievements of the members and associated organizations and prepares awards and award nominations accordingly. Chapter awards are presented annually at the year end Awards Dinner.

Committee Members:

Jacquelyn Cox, Oliver Wilhelm

AUDIT:



The **Audit** Committee oversees the organization's financial reporting and transactions for the Treasure at the close of the fiscal year.

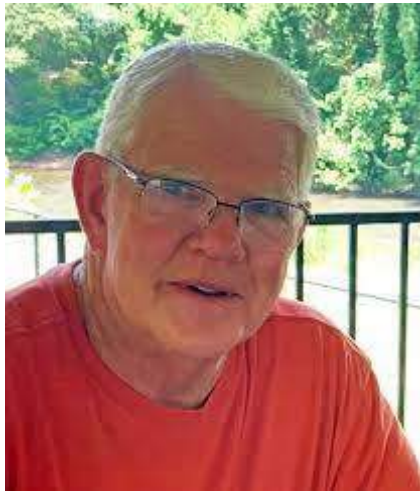
Committee Members:

Tom Scriven, Kori Camacho-Onal

If you are interested in joining the pack and serving on one of our Committees, please reach out to Oliver Wilhelm oliver@wstudioarchitects.com



the CSI Metro New York Chapter **Showroom Partner Program**



CSI Metro New York **Bob Crane Memorial** Showroom Partnership Program

For those of you who did not know Bob, he was our Chapter Programs/House Chair when we made the move from having our Chapter meetings in the basement at Annie Moore's to New York City Design Showrooms...

Bob raised the bar when it came to curating innovative programs & events and negotiating great locations...

To honor Bob's memory and dedication to our Chapter, the Board voted to name our Showroom Partnership Program in his name...



At each of our Chapter Meeting held at various New York City Showrooms, we present our hosts with a **Bob Crane Memorial Showroom Partner Plaque** to recognize their support of our Chapter.

the CSI Metro New York Chapter Sponsorships...



Platinum (\$1,500):



- Sponsor plaque at our Annual Awards Event
- Company Logo/Website Link displayed on Chapter Website
- Company Logo/Website Link displayed on Intro Slide at each Chapter Meeting
- Company Feature Article in four (4) Newsletters
- Tabletop at Annual Awards Event

Gold (\$1,000):



- Sponsor plaque at our Annual Awards Event
- Company Logo/Website Link displayed on Chapter Website
- Company Logo/Website Link displayed on Intro Slide at each Chapter Meeting
- Company Feature Article in three (2) Newsletters

Silver (\$750):



- Sponsor plaque at our Annual Awards Event
- Company Logo/Website Link displayed on Chapter Website
- Company Logo/Website Link displayed on Intro Slide at each Chapter Meeting
- Company Feature Article in one (1) Newsletter

Bronze (\$250):



- Company Logo/Website Link displayed on Chapter Website
- Company Logo/Website Link displayed on Intro Slide at each Chapter Meeting

If you are interested in being a Metro NY Chapter Sponsor, please reach out to bob.drake@stvinc.com / oliver@wstudioarchitects.com / kcamacho@enlead.com / tom_lanzelotti@gensler.com

And visit our Chapter Website www.csimetry.com for additional information...

the CSI Metro New York Chapter **Member Spotlight**



Each month in our Chapter Newsletter, we would like to provide to celebrate your accomplishments, put a face to a name, and just get to know each other a little better via our **Member Spotlight** Page...

At each Chapter Event, we will place a call for Member Profiles...If you would like to be featured in our **Member Spotlight** page raise you hand at one of our Chapter Events!



This Could be You...

All it takes is to:

1. Provide us with a Headshot...
2. Provide us with a little insight into who you as a professional...Are you an Architect, a Designer, a Specifier, a Product Rep, a Product Manufacturer, an Engineer, a Contractor, etc.
3. Provide us with a little insight into who you are outside the business environment...
4. Let us know what makes you tick...

If you are interested in sharing a little about yourself, feel free to reach out to:

Kori Camacho kcamacho@enneed.com

Tom Lanzelotti tom_lanzelotti@gensler.com



the CSI Metro New York Chapter **Member Spotlight**



Jamie Nalley

Jamie Nalley joined the Metropolitan New York chapter of CSI in spring of 2025, and is a senior Specifications Specialist at Skidmore, Owings, and Merrill. He works on a variety of projects spanning geographies and typologies, including large-scale commercial, healthcare, institutional, and transportation projects. He is also actively involved with the enclosures group within SOM, helping to ensure that the latest technologies and performance standards are included in project specs. Jamie also has experience working for manufacturers, developing deep technical knowledge for concrete fasteners and firestopping applications. Jamie studied Architectural Engineering and graduated in 2015, with a bachelor's degree awarded from The University of Texas at Austin. He is currently pursuing both Professional Engineer and Registered Architect designations.

In his free time, you can find Jamie checking out the latest art installations or restaurants with his friends, or in a Brooklyn park with his dog, Lucky. You might also find him reading, playing video games, or catching an astronomy show at the Hayden Planetarium. Jamie is always happy to check off an art gallery, café or pub, or museum from his never-ending list of places to explore- send him your list of favorite NYC haunts.

Northeast Region Updates:



the Northeast Region CSI is comprised of 14 local chapters:

Metro NY (1950); Boston (1956); Buffalo-Western NY (1958); Hartford (1963); Syracuse (1964); Rochester (1964); Rhode Island (1965); New Jersey (1966); Eastern NY (1967); Vermont (1968); Worcester (1968); Housatonic (1969); Northern New England(1970); Long Island (1970)

the Mission of the Northeast Region is to:

“Build Strong Chapters through Communication and Collaboration”

The Region employs **Terri Bracken** as our marketing support administrator to help the Chapters. Some of the Chapters are involved in utilizing the Dynamic Chapter Program offered by National. Our region administrative assistant Terri Bracken attends these webinars and is always willing to offer her expertise. Terri can also provide services to the chapters by completing AIA submissions and certificates, creating newsletters, chapter invites and coordinating RSVPs. Terri is always excited to hear from the Chapters. In a short time, all the Chapters will be having elections for 2021. She is reachable at 508-523-4704 and neregion@gmail.com



Northeast Region Updates:

the CSI Northeast Region Board

Executive Committee:



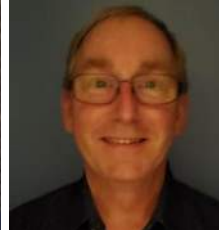
President
Frank Mruk



Vice President
Oliver Wilhelm



Secretary
Barton Ross



Treasurer
Roy Olsen



**Immediate Past
President**
Ken Lambert

Voting Board Members:

Boston Director: Kristin Norwood

New Jersey Director: Anthony Stazzone

Buffalo Director: Jim Bourgeois

Northern New England Director: Ken Lambert

Eastern NY Director: Steven Van Hoose

Rochester Director: Allison Shannon

Hartford Director: David Newman

Syracuse Director: Kevin Phillips

Housatonic Director: Roy Olsen

Vermont Director: Rebecca Campbell

Long Island Director: Paul Commesso

Worcester Director: Maria Smith

Metro NY Director: Erin Spadavecchia

Non-Voting Member:

Institute Director: Tom Lanzelotti

Northeast Region Updates:

Northeast Region President's Message:

Frank Mruk

It is an honor to serve as your CSI Northeast Region President . At the region our vision is simple: to make our region more visible, more engaged and more impactful.



Our Region Executive Committee, Board Members, and Committee Chairs all met in Albany for a Strategy & Strength Retreat. This was more than a meeting – it was a chance to step back, connect, and imagine the future of CSI together. As we navigate changes in our industry, our ability to share knowledge, mentor the next generation, and amplify the voice of CSI will define our impact.

The Region Executive Committee, Board Members, and Committee Chairs brought their ideas, energy, and passion to the table. Together, we can make the Northeast Region a model of collaboration, leadership , and innovation – one that reflects the best of who we are as professionals and as a community.

Northeast Region Updates:



CSI NORTHEAST REGION 2026 CDT CANDIDATE PREPARATION COURSE

- WHEN:** 10 weekly classes
February 17 to April 28, 2026
6:00 to 7:00 pm
- WHERE:** From the comfort of your
own home, through virtual
tutoring by live instructors
- COST:** See below



The Northeast Region is proud to announce that it will offer preparation classes for the Spring 2026 Construction Document Technologist exam for candidates seeking CDT Certification! Instructors from throughout the Northeast Region are providing an all-star faculty to teach the CDT exam preparation course. Each instructor holds their own CSI Certification and is experienced in the subject matter they will be presenting. Participants will benefit from training with top professionals in the Region and expand their networks by meeting peers from other chapters. The practical knowledge obtained through this course, which participants will use every day in their careers, will be well worth the time and cost investment!!

The CDT certification provides a comprehensive program of study for anyone seeking to expand their professional knowledge and value. The CDT addresses all phases of delivering a capital project and requires a practical, useful understanding of project team roles and responsibilities, project conception and delivery methods, design, preparation of construction documents, procurement of materials and services, construction, and the facility manager's life cycle activities. The only prerequisite is that CDT exam candidates must have a high school diploma or equivalent. However, CSI recommends that CDT exam candidates also possess two years of experience in construction contract administration or construction management and/or completion of college-level coursework in one of the design professions or a related field.

Classes are \$100 for CSI members and \$200 for non-members. Any non-member who joins CSI before the last class will receive a \$100 refund.

The Spring 2026 exam period is between May 5 and June 10, 2026; thus, the prep course will conclude as the exam window opens.

Northeast Region Updates:



MEET THE 2026 CDT FACULTY! CSI NORTHEAST REGION CDT CANDIDATE PREP COURSE

CSI's Northeast Region has developed a new approach to credential preparation tutoring by assembling a team of veteran instructors to participate in a 10-part program to prepare candidates for the Construction Document Technologist certification. Each instructor will present a live online session with which he has tangible professional experience. Increase your professional network and deepen your knowledge of the test material by interacting with peers and educators from around the country through this unique arrangement!

Tom Scarlata, CSI, CCS, CCCA, CDT, AIA



Tom is a registered architect and Principal at Bargmann Hendrie + Archetype, Inc., where he's specialized in Recreational, Athletic, and Aquatic Design for over 33 years and regularly oversees and organizes multiple projects. He is an active member of the Boston Chapter, where he also serves as the Certification Chair and regularly teaches CDT classes.

Kevin O'Beirne, PE, FCSI, CCS, CCCA, CDT



Kevin is a graduate of the State University of New York at Buffalo with a BS in Civil Engineering and is the national manager of engineering specifications at a global engineering and architecture design firm. He is a PE in NY and PA with 38 years of experience designing and constructing water and wastewater infrastructure. Kevin has taught CDT courses annually since 2007 and an annual CCCA course during 2007-2018. He co-authored CSI's Construction Contract Administration Practice Guide, Second Edition (2020), has served on various CSI national committees, and is an ACEC delegate to the Engineer's Joint Contract Documents Committee (EJCDC) since 2008, serving on EJCDC's Construction, Procurement, Construction Management, and Design-Build subcommittees. He is the certification chair of CSI's Buffalo-Western New York Chapter, and has published over 100 articles on construction documents, procurement, construction contract administration, professional licensure, and related topics.

Northeast Region Updates:



**MEET THE 2026 CDT FACULTY!
CSI NORTHEAST REGION
CDT CANDIDATE PREP COURSE**

Paul Fogarty, CSI, CCPR, CDT



Paul Fogarty is the president & CEO of WestWood USA, a building materials manufacturer specializing in innovative, PMMA-based liquid-applied systems for roofing, waterproofing, and trafficable surface applications. With more than 25 years in the commercial building envelope industry, his career has been rooted in the manufacturer and supplier side, with experience spanning technical support, sales, marketing, and education. Paul has been actively involved with CSI since 2017. He previously served as president of the Chicago chapter of CSI and currently serves as a director with the Metro New York Chapter. He is a co-author of the Construction Product Representation Practice Guide and is a long-time advocate for CSI certifications and professional development. His work includes extensive involvement in certification efforts at the chapter, region, and national levels, including leadership of the nationally recognized CSI Chicago Chapter certification program.

Interested? Visit <https://nercsi.com/register-cdt-preparation-class/> before February 10, 2026, to sign up for the prep course, view the syllabus, and see a listing of the exam's source materials with which candidates must become familiar.

Northeast Region Updates:



We are proud to recognize the *individuals from our Northeast Region who successfully passed their certification exams this past fall and spring.*

Congratulations to the newest credential holders of the Construction Documents Technologist (CDT®), Certified Construction Specifier (CCS®), Certified Construction Contract Administrator (CCCA®), and Certified Construction Product Representative (CCPR®) designations!
Your commitment to professional growth and excellence in the construction industry is commendable...

Fall 2025:

CDT:

Perri Feit, *Boston*
John Graham, *New Jersey*
Gelyn Strileckis, *Boston*
Raymond Wenzel, *Rochester*

CCS:

Aleksandr Gusel, *Metro NY*

CCCA:

Sally Woodson, *Boston*

Spring 2025:

CDT:

Daniel Arbelaez, *Metro NY*
Anna Close, *Metro NY*
Sara Emry, *Metro NY*
Samantha Kirk, *Norther New England*
Jai Patel, *New Jersey*

CCS:

Andrew Herbst, *Metro NY*

CCCA:

Kathleen Courtney, *Boston*
Caseyann Sari, *Metro NY*

Northeast Region Updates:



CSI Northeast Region Conference

May 14-16, 2026

Buffalo, New York



Thursday, May 14, 2025: Welcome

- Evening: Welcome Reception
- Dinner Break (On Your Own)
- After Dinner: Hospitality Suite

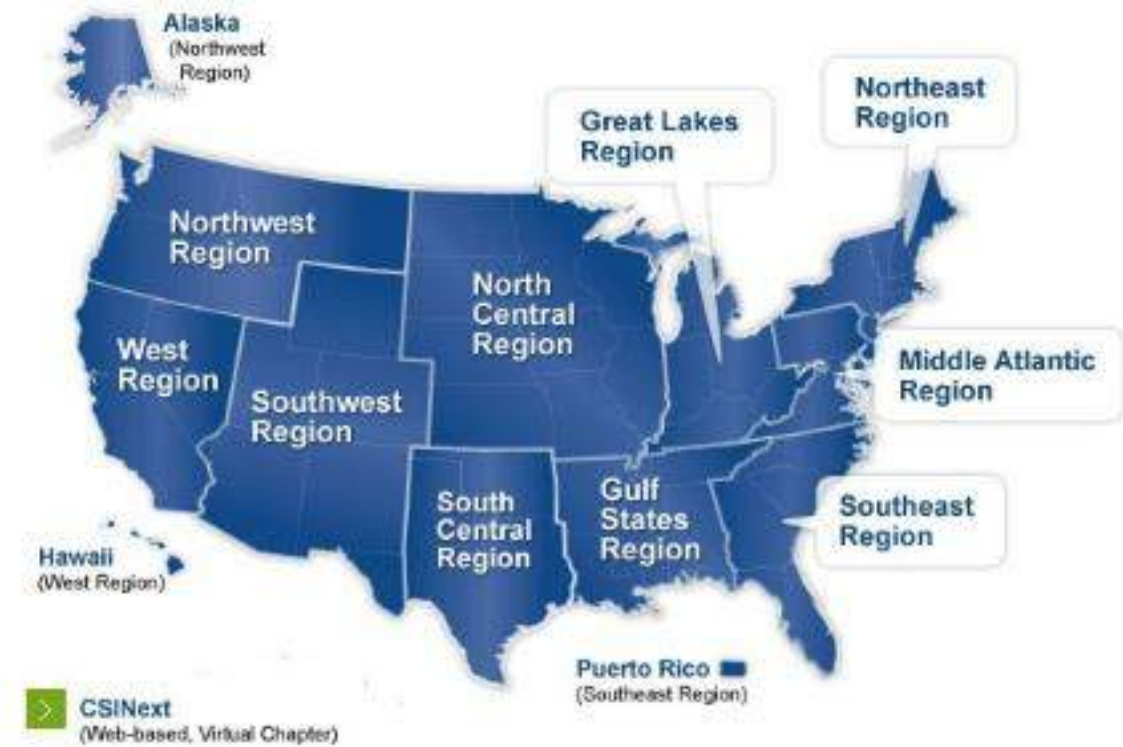
Friday, May 15, 2025: Technical Education Day

- Morning: Site Tour Programs (9:00-11:00am)
- All-Day Trade Show (11:00am-5:00pm)
- Lunch: Kicking Off Project Success Keynote (12:00 noon)
- Afternoon: Technical CEU Programs (1:30pm & 3:00pm)
- Cocktail Hour; Tradeshow Floor (4:00pm)
- Evening: Conference Reception & Banquet (7:00pm)

Saturday, May 16, 2025: Professional Leadership Development Day

- Morning: CSI Institute Update (9:00am)
- Late Morning: SPECTalks (10:30am)
- Lunch: Keynote & Awards
- Afternoon: Leadership Workshops (2:00pm & 3:00pm)
- Afternoon: Region Board Meeting (2:00pm)

National Updates:



CSI NATIONAL:

- Comprised of 10 Regions
- Institute website: www.csiresources.org

National Updates:



CSI “**rocked**” Cleveland, Ohio...October 15-17, 2025



National Updates:



CSI NATIONAL CONFERENCE 2025

Recap



National Updates:



CSI NATIONAL CONFERENCE 2025 Recap



National Updates:



CSI NATIONAL CONFERENCE 2025

Recap



Congratulations to the new class of CSI Fellows



Arthur "Cam" Featherstonhaugh IV
FCSI, Lifetime Member, CDT*



Charles Hendricks
FCSI, CDT*



Thomas Lanzelotti
FCSI, CDT*



Randall Lewis
FCSI

CSI is proud to welcome four distinguished professionals from the architecture, engineering, construction, and owner (AECO) community into the [College of Fellows](#).

CSI Fellows are members whom their peers select for this distinction based on achievements in the industry and their above-and-beyond contributions to CSI.



National Updates:



CSI NATIONAL CONFERENCE 2025

Recap

Outstanding Chapter Commendation

This award is presented to chartered chapters that meets the designated pre-requisite core criteria, as documented in the appropriate form, and has provided the required supplemental data. As chapters earn Commendations, they may reach the following milestones. (Note: The number of years is not required to be consecutive.)



Congratulations to Boston CSI a ten-time winner of the “Outstanding Chapter Commendation Award.”

Each month, the Boston Chapter looks forward to getting together to share ideas, learn from one another, and enjoy a great program and social event.

The greatest strength of their chapter is their community, their board, their committees and their active membership. All are willing to share ideas on how to improve the CSI experience.

National Updates:



Speakers

Next-Gen Specifiers: Tech, Talent & Relevance for a Future-Proof Profession



Cam Featherstonhaugh
FCSI, Lifetime Member



Thomas Lanzelotti
FCSI, CDT®



Mark Dorsey
FASAE, CAE

CSI NATIONAL CONFERENCE 2025
October 15-17 | Cleveland, OH



See how two top industry leaders are redefining the future of specifications.

At the 2025 CSI National Conference, new CSI Fellows [Cam Featherstonhaugh](#) and [Thomas Lanzelotti](#) will share real-world strategies for leveraging AI and technologies to enhance value to your firm or your project while elevating the core skills that make specifiers indispensable.

Moderated by [Mark Dorsey, FASAE, CAE](#), we'll explore actionable approaches to recruiting and retaining emerging talent, reframing the specifier's role, and future-proofing your professional brand.

Cleveland Rocks!

2025 CSI National Convention...3 Days in Cleveland

By Tom Lanzelotti, FCSI, CDT, AIA



the Knowlton School
THE Ohio State University



the Rock & Roll Hall of Fame
Cleveland Ohio



Cleveland is well known for the Rock & Roll Hall of Fame but for a few days in October 2025, it was known as the home of the CSI National Conference...

Every year since 2011 in Chicago, I have prepared a follow-up story of my experiences at the National Conference to share with our Metro NY Chapter. After missing last year's conference for my daughter's wedding, I am back at it again, returning to OHIO, the state of my college roots for the 2025 CSI National Conference in Cleveland...

Here's is my Story...

This Conference was "the BEST National Conference Ever!" with so much electricity in the air and what seemed to be so many new faces in the crowd...

DAY #1 – Wednesday, October 15, 2025:

Things got off to a fast start on Wednesday at 8:00am with pre-conference activities with an informative, inspirational, and interactive Leadership Session: **"Stronger Together: Navigating the CSI Ecosystem to Lead with Confidence"** facilitated by Caitlin Halloran Edwards. The session was broken down into four parts:

- Part 1: An introductory presentation by Caitlin regarding "Basic vs. Personalization". Caitlin spoke to the notion that true leadership involves taking basic tools, concepts, and strategies (provided by national) and sharing them, not just out-of-the-box but with a personal touch, flair, or perspective so they become interesting stories open to creating a discussion instead of a one-sided conversation.
- Part 2: Panel Discussion with current CSI leaders (Brad Schwab from the Chicago Chapter, Ali LaManna from the Portland, Oregon Chapter, and Kirk Paisley from the Ohio Valley Chapter) moderated by Caitlin. Some of my take-aways from the discussion:
 - ✓ "We are the answer". Trust in Yourself and bring YOU to the table...
 - ✓ "Swing for the Fences". Don't be afraid to fail...
 - ✓ "Future-izing". We must be looking ahead...the status quo is being behind...
 - ✓ Membership Growth is not a Goal, It's a Result...
- Part 3: We were introduced to a riveting conversation regarding the Student Perspective from Karina Kane, Student President of the CSI Knoxville Student Collaborative at the University of Tennessee, Knoxville...Amazing how one passionate voice can create a movement...

CSI NATIONAL CONFERENCE 2025

- Part 4: Interactive Workshop focused on "What's Your Winning Idea?" We broke out into five groups to tackle the following topics via "post-it" brainstorm ideas:
 - ✓ Membership: Not about #'s...Takes Patience...Personal Value Proposition...Connections...Belief
 - ✓ Local Board Meetings: Pipeline...Accountability...Streamline...
 - ✓ Volunteer Leadership Recruitment: Patience...Bite-Sized Asks...Passion...Enjoyment...
 - ✓ Educational Offerings: Mix it Up...Expertise...Fun...the Heartbeat...
 - ✓ The Next Generation: Listen...Two-Way Street...Tired of Zoom Calls...

Summary of the Leadership Training: It is important to remember our Mission...It's not about membership numbers...it is about developing better Design + Construction Professionals... "Personalization and Passion" can make all the difference...



Next up was **Speed Networking** at high noon...Brian Knotts does an incredible job organizing these rapid-fire, 15-minute, one-on-one sit downs, pairing up Design + Construction Professionals with Building Product Manufacturers (BPM's)...Eight sessions later, I gained valuable insight to new innovative products and expanded my network...Can you say WIN-WIN...

Day #1 closed out with the Speed Networking Happy Hour, followed by the Conference Welcome Reception which led to some extra-curricular networking over dinner & drinks!

DAY #2 – Thursday, October 16, 2025:

Day #2 started off with the Official Conference Welcome and Opening Keynote by CSI Board Chair William Sundquist...William's message started out by referencing a poem "A Builder or a Wrecker" by Charles Franklin Benvegar...

As I watched them tear a building down
A gang of men in a busy town
With a ho-heave-ho, and a lusty yell
They swung a beam and the side wall fell
I asked the foreman, "Are these men skilled,
And the men you'd hire if you wanted to build?"
He gave a laugh and said, "No, indeed,
Just common labor is all I need."
"I can easily wreck in a day or two,
What builders have taken years to do."
And I thought to myself, as I went my way
Which of these roles have I tried to play?
Am I a builder who works with care,
Measuring life by rule and square?
Am I shaping my work to a well-made plan
Patiently doing the best I can?
Or am I a wrecker who walks to town
Content with the labor of tearing down?
"O Lord let my life and my labors be
That which will build for eternity!"



National Updates:



CSI NATIONAL CONFERENCE 2025

Posing the challenge for us to be builders and lead change: Building Upon the Past & Looking Towards the Future...

- Build Up PEOPLE via communities that promote a sense of welcoming & belonging...it's a ripple affect...
- Build Up our PROFESSION via the support and mentorship of the next wave of professionals...
- Build Up PROJECTS with CSI as a Center for Innovation...

Fired Up by William's insightful Keynote address, I was off to garner some knowledge navigating the broad spectrum of learning breakout sessions to feed my mind I attended:

- "Sculpting the Future with Carbon-Neutral Concrete" with our very own Northeast Region President, Frank Mruk co-leading the discussion with Dr. Randolph Kirchain...

After the morning learning program, my National Conference experience began to take a different turn...Typically, I would try to take as many learning programs as I can and meet with as many product manufacturers as I can but, this year, I had the added responsibility of becoming a new CSI Fellow...With this honor, I was able to attend my first College of Fellows Annual Meeting...This was the first time that the honor of Fellowship began to really set in. Holly Jordan, the new Chancellor of the College of Fellows left us with a simple but powerful message: Fellowship is not an ending...it is a calling for greater leadership!

As the day wore on, I began to reflect on my journey to Fellowship and on how many people over the years have contributed to my growth within CSI and as a professional. The Fellowship process started earlier in the year with our Metro NY Chapter Leadership submitting my nomination for CSI Fellowship...and, as I embarked on the nomination/application process, the first thing I realized was that I was going to need a lot of assistance.

- Special thanks to Jacquelyn Cox. Jacquelyn's passionate leadership and sponsorship throughout the process was the driving force that allowed me to stay on track and make it through the application process.
- Thanks to Marvin Kemp, my CSI Fellow Sponsor who I gained so much respect for while serving on the National Board under his passionate and ethical leadership.
- Thanks to Bill DuBois, the man who introduced me to CSI and more importantly became my CSI Mentor and Spiritual Guide.
- Thanks to the many members of our Metro New York Chapter for their belief and support of me as I navigated my way through the various levels of participation and leadership.
- Thanks to Mark Dorsey for his leadership and vision that led me to step up and participate in the Component Value Taskforce expanding my CSI Network beyond the Northeast Region and giving me my first glimpse into the inner workings of CSI.
- Thanks to my fellow Component Value Taskforce colleagues, who from our various backgrounds, united to coin the phrase "We are One CSI"
- Thanks to Cam Featherstonhaugh, who presented me with an opportunity to apply for a position on the National Board over a drink in National Harbor.
- Thanks to my colleagues at Gensler for supporting me in my journey at CSI.
- And most importantly Thanks to my wife and daughter, who grew to understand what being part of CSI meant to me, personally and professionally, and gave them the strength to support me in my endeavors that sometimes took me away from them.

My apologies to the many others who have contributed to my growth as a professional and a person there are so many of you...I am sure you know who you are...and to you all I say THANKS!

CSI NATIONAL CONFERENCE 2025

So, Thursday night had finally arrived, and things were beginning to turn emotional. It was time for the CSI Celebration & Awards Event. Fellowship was about to become real, and my mind was racing as I was thinking about all those who had a part in making this all possible...the recognition that was about to happen was not something I achieved alone.

Walking up to the stage to receive my Fellowship Medal and Citation Plaque, with my heart racing and palms sweaty, I chose the music of THE Ohio State University Marching Band's "Fanfare for a New Era" as a reminder of where my Architectural career dream all started in the Buckeye State at THE Ohio State University...I was thinking how fortunate I was to have my CSI mentor Bill DuBois by my side to read my citation and introduce me as a Fellow...to have my wife making the trek to Cleveland to finally experience what CSI has meant to me and to meet so many of the passionate professionals I have shared time with, away from my family, in the hope of improving our industry...I was so grateful to see some of my Metro NY, Northeast Region, and Institute colleagues there...I was so grateful that an Ohio State college friend who lives in Cleveland found the time to be there...All this made it a special evening, one that I will never forget.

To close out an incredible evening, and keeping with her never-ending support, Jacquelyn organized a dinner at a local Cleveland restaurant where we all continued sharing and growing our relationships & friendships...



DAY #3 – Friday, October 17, 2025:

Day #3 came around quickly and started with the CSI Annual Business Meeting at 8:30am... That was followed up by my next stress test...I was tapped on the shoulder by Mark Dorsey to participate in the Friday morning Keynote a panel discussion "The Next-Gen Specifiers: Tech, Talent & Relevance for a Future-Proof Profession" along with new Fellow Cam Featherstonhaugh.



After the Keynote Panel Discussion, I took the opportunity to sit in on another learning program: "Critical Specifications Collaboration Between Design Professionals, Manufacturers, and Specification Writers" led by Holly Jordan, the new Chancellor of the College of Fellows. It was an engaging

National Updates:



CSI NATIONAL CONFERENCE 2025

discussion that spoke to the heart of CSI...the importance of leveraging our colleagues in all we do to deliver complex, innovative, and breathtaking projects. To coin a potentially overused phrase "It takes a village" and CSI is that village.

The conference ended with an emotion provoking Closing Keynote: "How to be More Interesting than a Cell Phone" with Deedre Daniel, Founder of The Interesting Conversations Company... Deedre led us through an interactive session focused on "Being Truly Interesting, as Our Superpower". She shared insight into how to break free from boring conversations, and our bad habits in order to connect with others in a meaningful and memorable way...Via interactive exercises, we were challenged to recognize our own negative habits that often can often stop connection with others in its track, and how to work on mastering Five skills that can make us magnetic, helping to build stronger relationships faster via creativity and the embracing humor...



As the conference closed, my focus then shifted to my role as Director from the Northeast Region with Friday evening and Saturday being spent with my colleagues on the CSI National Board of Directors for our fall meeting.

It was a great being back "home" in the Buckeye State for a few days and I have to say it was so serendipitous that I got to experience a career highlight in the place that planted the seeds for my career...Talk about Karma!

National Updates:



CSI NATIONAL CONFERENCE



2026 CSI National Conference

Gain new skills and grow your network. Join more than 400 of your peers as we discover the trends shaping our industry and share strategies for helping you navigate the changes ahead.

October 7-9 | Phoenix, AZ



Built-In Networking

Impactful Sessions

Community Celebration





So Why Join CSI?

CSI...an organization comprised of a diverse, cross-sectional group of design + construction professionals focused on improving the built environment through collaboration and leveraging ideas & experience...

ADVANCE Your Career

Be confident in your role in the construction project and earn your employer's confidence in your skills and knowledge. As a part of the CSI Community, you have added resources to earn your certificate as a Construction Document Technologist (CDT) or one of the advanced CSI certifications...

STAY Up-To Date

CSI brings you the best in construction building communications, CSI's monthly peer-reviewed magazine, "The Construction Specifier", discusses the latest trends in construction building and design. CSI Weekly e-newsletter keeps you up-to-date on issues and events affecting your profession and the industry. And your local chapter keeps you current on the issues important to where you live and work...

CONNECT with Colleagues

Engage with colleagues from around the world on www.csi.resources.org, join an on-line community and your local chapter. You know how valuable it is to be a member of professionals from every facet of the industry...

DRIVE the Industry

CSI volunteers develop the standards and formats that guide construction communication. They create MasterFormat, the Practice Guides, and many other projects and programs vital to the construction community. As a member of CSI, you can volunteer and drive the industry locally and nationally...

are you ready for your **VIP** Member Experience?